

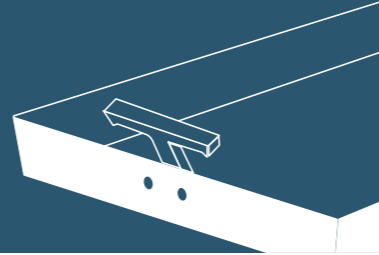
# Building accessories.

**Manhole covers,  
plates, standard gratings  
and window wells**

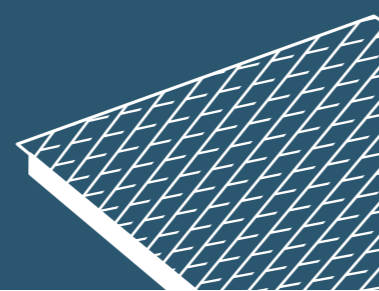


**Build your  
changes.**

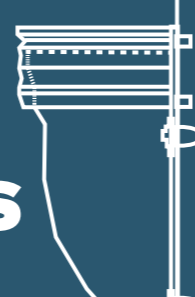
# 1. Manhole covers



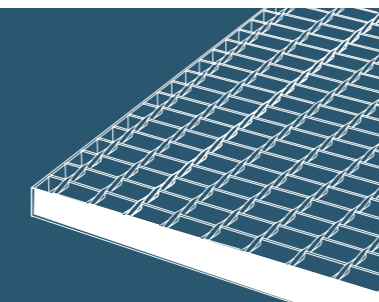
# 2. Plates



# 3. Window wells, windows and frames



# 4. Standard gratings



# 5. Galvanised and stainless steel accessories



# Contents

<b>1. Manhole covers</b>	<b>14</b>
<b>1.1 Special manhole covers</b>	<b>18</b>
· Green	18
· Key	20
· Funnel	22
· Storm	23
· Valet	24
· Powerful	25
<b>1.2 Custom manhole covers</b>	<b>26</b>
<b>1.3 With L-shaped frame - h 30-50-55-85 mm</b>	<b>28</b>
<b>1.4 With T-shaped frame - h 55-65-85 mm</b>	<b>41</b>
<b>2. Plates</b>	<b>46</b>
<b>2.1 Basic plates and well covers: pedestrian areas</b>	48
<b>2.2 Professional plates: urban areas, streets and highways</b>	52
<b>3. Window wells, windows and frames</b>	<b>54</b>
<b>3.1 Window wells</b>	<b>56</b>
· Reinforced polyester structure	57
· Pressure-locked grating	58
· Heelguard pressure-locked grating	58
· Accessories: adapters, filters, ventilation units	59
<b>3.2 Windows</b>	<b>60</b>
· Galvanised steel, with glass panels and perforated sheet metal gratings	60
· Tilt & turn or bottom-hung	61
<b>3.3 Frames</b>	<b>62</b>
<b>3.4 Doormat set</b>	<b>63</b>
<b>4. Standard gratings</b>	<b>64</b>
<b>4.1 Standard gratings</b>	<b>66</b>
· Forge-welded grating: walk-over and drive-over load-bearing capacity	67
· Pressure-locked and heelguard grating: for pedestrian and urban areas	72
· Gully gratings	74
<b>4.2 Gratings for window wells</b>	<b>75</b>
<b>5. Galvanised and stainless steel accessories</b>	<b>78</b>
· Satellite dish pole	80
· Antenna holder	80
· Safety posts	81
· Cabinets and doors for water and gas meters, insulated and non-insulated	82
· Posts, rods and eye bolts for meshes	86
<b>Contacts</b>	<b>88</b>



## Gridiron. 40 years of Italian history

---

Gridiron was founded in **1979 in Italy**, in Mareno di Piave, thanks to the entrepreneurship and tenacity of **Giancarlo Zanette**, and is currently present in over **36 countries worldwide** as a cutting-edge company operating in the public and private building sectors.

The Gridiron range includes **technical gratings, drainage systems, doormats** and **building accessories** that are fitted in monumental buildings in central **London**, drain water from the **San Giorgio Bridge**, serve as components in oil rigs in the **Atlantic Ocean** and equip luxury **public** and **private** facilities, where they combine functionality and aesthetics.

Gridiron, which is still firmly headed by the **Zanette family**, currently organises its production, research and development activities in various plants covering a total surface area of **70,000 m<sup>2</sup>** located in North-Eastern Italy, where it relies on the precious contribution of **150 people**.

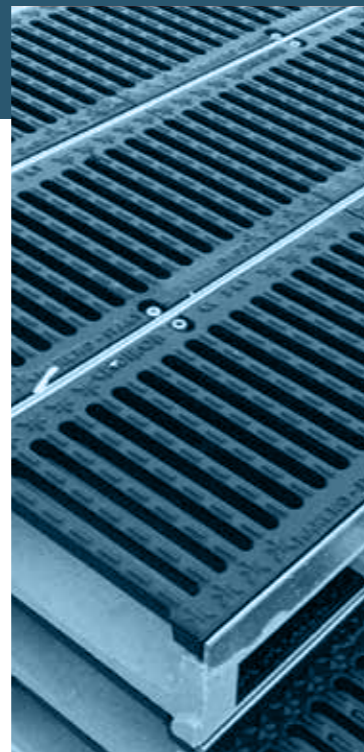
# Gridiron.

## A single answer for multiple solutions

Knowing **steel** and processing **it to make technical gratings** has led us to develop new product categories over the years: **technical doormats**, **building accessories** and **drainage channels**.

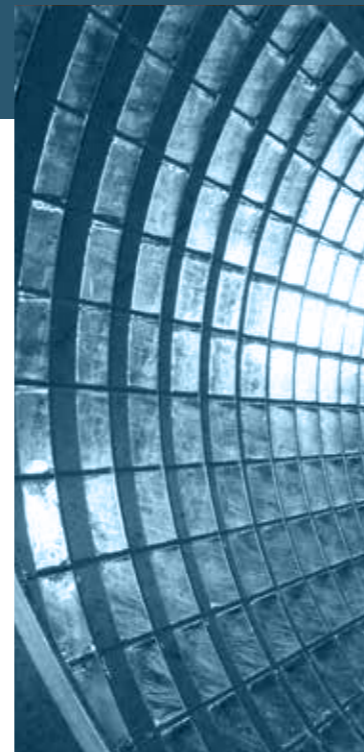
For the latter, we started out as suppliers of covers and soon decided to manufacture the entire system in-house, driven – as always – by our desire to bring **a unique know-how** to the market.

Our **standard products** provide endless **customisation** options, offering the ideal solution for every application, from **major works** to **exclusive projects**.



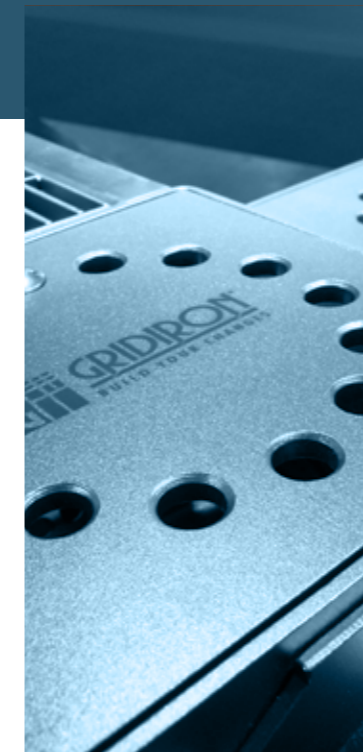
### Drainage systems

We are the **only** company in **Europe** to manufacture the **entire drainage system** (channels, profiles, gratings, sump units and accessories) in **three different materials** (polymer concrete, vibro-compressed and reinforced concrete, ABS).



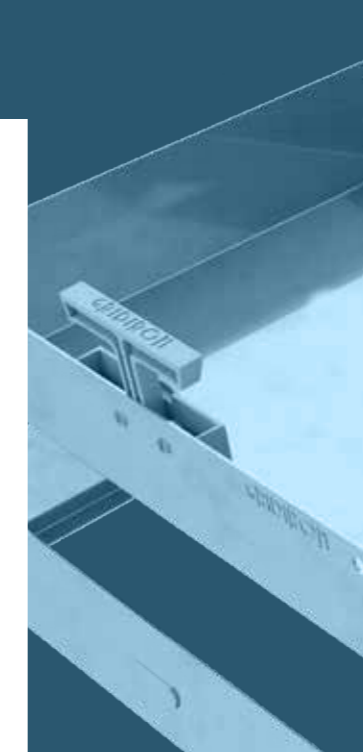
### Metal gratings

Our origins are inextricably linked to **gratings**, an extremely **versatile** product which we manufacture in the **forge-welded** and **pressure-locked** versions, in galvanised steel, **stainless steel** and **aluminium**. Moreover, we are among Europe's leading manufacturers of **sun screens** and **wind screens**, and offer a broad range of **steps**, **fences** and **gates** for industrial and domestic use.



### Stainless steel drainage systems

**Stainless steel**: the perfect material for satisfying **aesthetic requirements**, indispensable in all sectors that require **resistance to corrosion** and compliance with **hygiene and health regulations** (petrochemical, mining, pharmaceutical, food processing industries, etc.). The Gridiron range includes an extensive range of **basins**, **channels**, **standard**, or **custom wastes**.



### Building accessories

Our range of building **accessories** has expanded over the years to include **manhole covers** and **standard** and **custom plates**, **window wells** and **standard gratings**. The range includes cutting-edge systems such as the **"Key"** manhole cover (**watertight**), the **"Green"** model (**draining** version for gardens), and many more.



### Technical doormats

Gridiron doormats combine **visual appeal**, **functionality** and **safety**, and are all equipped with a **soundproofing** base. Available in various thicknesses, colours and types of coatings, they are entirely **customisable**. Be it the hall of a luxury hotel or the entrance to an **airport**, a **company** or a **building**, Gridiron will be able to guide you right from the design phase to the final installation.

# Gridiron. Certificates



## ISO 9001: industrial excellence

The certification in accordance with the **ISO 9001** standard guarantees the maintenance and ongoing improvement of the **quality** of its **goods** and **services**, through **monitoring** of all **processes** and the measurement of **results**.

In an increasingly complex and cluttered global market, this becomes an important factor that drives **customers** to **choose** the company, acknowledging its **high-quality standard** and **reliability** at an international level.



## Product certifications

Our products are **CE**-marked in accordance with relevant standards:

**Drainage channels:** EN 1433

**Gates:** EN 13241

**Welded steel components:** EN 1090

The latter, in particular, offers further proof of our commitment towards the **safety** of our **operators**.

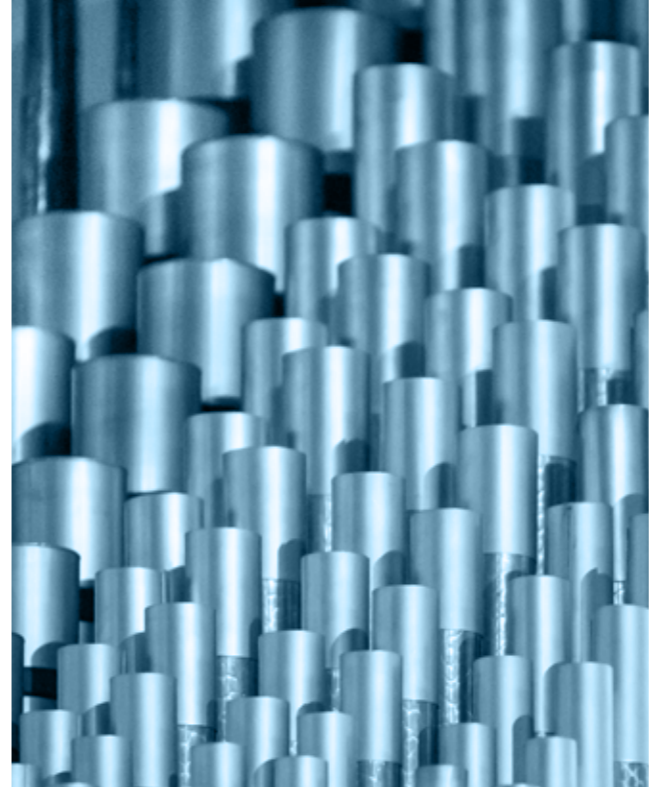




# Gridiron. Raw materials and technologies

Our **unique** and **innovative approach** on the market derives from our success in merging two aspects that have elevated **"Made in Italy"** to world fame: the art of **working** matter and advanced **technological research**. This has allowed us to become **experts** in new creations, and it is also the secret behind our ability to operate with a **flexible** and highly **customised** approach.

Since the outset we have been collaborating with **premium suppliers**, with which we have established a relationship based on **trust** and mutual **esteem**: a further guarantee of our reliability and professional approach, allowing us to manufacture **qualitatively excellent** products for our customers.



We work with **pickled** and **galvanised** strips that are **heavier** than the market average, resulting in **better performance** for our machinery and product **finishes** that are better and significantly **longer-lasting**. Thanks to a **production process** that is carried out **entirely in-house**, our products can fulfil requirements for **any shape** and **size**.

We choose to **test** each product internally, in our **Research and Development department**, where we conduct tests that are **even more rigorous** than those prescribed by the sector standards.

**We invest** constantly in the implementation of **new processes**, the introduction of **innovative software** and the purchase of **new-generation machines**, which are then **re-engineered internally**, making the **quality** of Gridiron products unique and non-reproducible.



# Gridiron. Services

---

From **design** to **installation** consulting and **logistics**, Gridiron is a solid **partner** for our customers, for a reliable **collaboration** covering all aspects.

Ever since the beginning we realised the importance of being able to offer a **product** in the **broader sense**, where "product" refers not only to the material outcome but also to the ecosystem that is intimately bound to it, where **services**, **relations** and **experiences** all merge.

We operate with care at every step of the process, from the initial contact with the customer to the delivery of our products. Also when we prepare the **shipment**, we study the loads so that the unloading and assembly operations can be carried out smoothly and effectively.

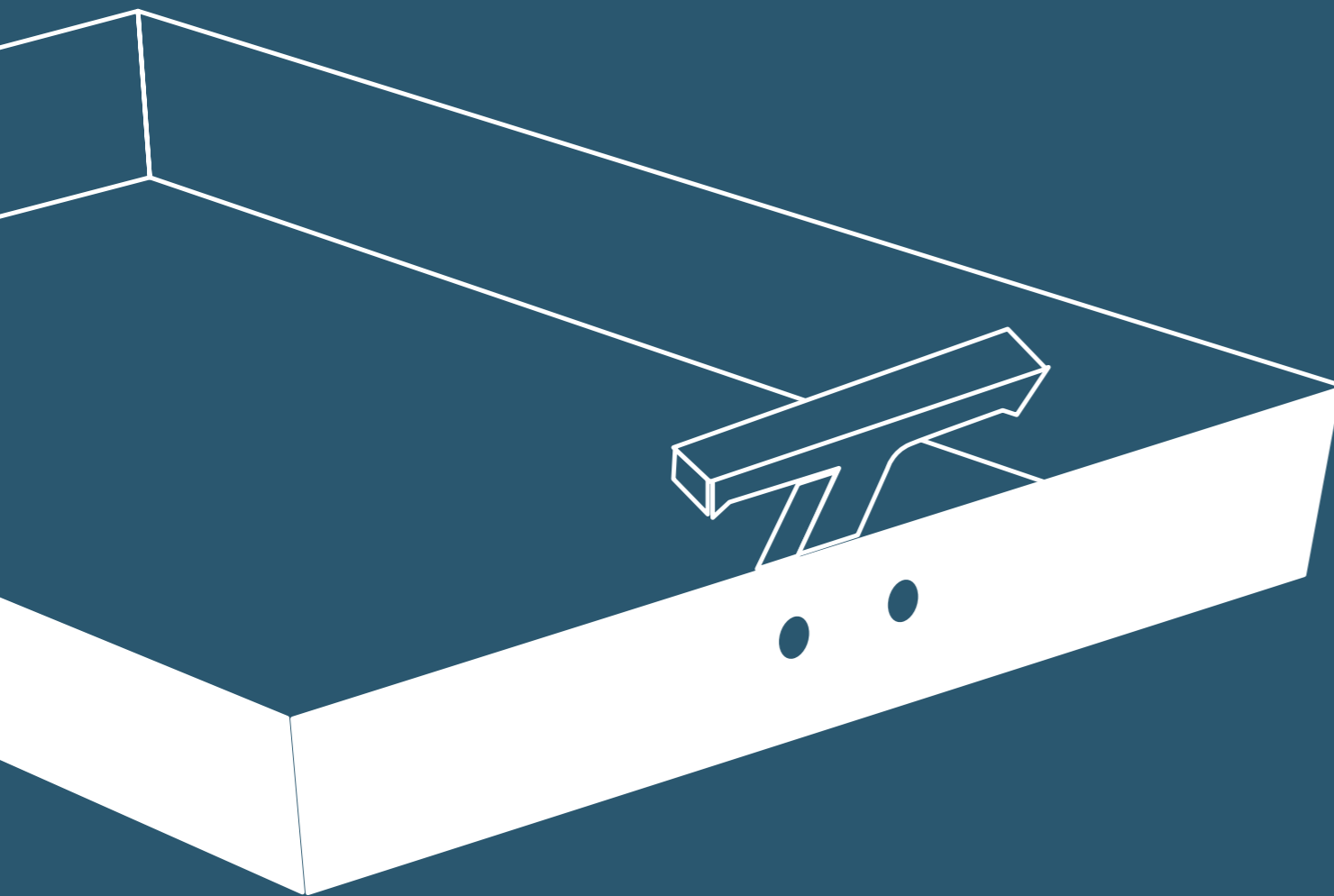
Our main services:

- Preventive analysis**
- Solution research**
- Design**
- Load calculations**
- Drafting of specifications**
- Installation instructions**
- Fast and smart logistics service**





# 1. Manhole covers



Over the years we have expanded our range of **manhole covers** to include exclusive and cutting-edge models capable of guaranteeing **easy lifting** coupled with a refined **design** that adapts to any environment.

As with all our products, we ensure a **thicker galvanisation** (Z200) than the market average, for a longer **life** and a better **finish**.

A complete **range in stock** and our internal **production flexibility** allow us to ensure **fast** and **timely delivery** for our customers.

There are countless customisation options in terms of **materials**, **sizes** and **finishes**.

<b>1.1 Special manhole covers</b>	<b>18</b>
• Green	18
• Key	20
• Funnel	22
• Storm	23
• Valet	24
• Powerful	25
<b>1.2 Custom manhole covers</b>	<b>26</b>
<b>1.3 With L-shaped frame - h 30-50-55-85 mm</b>	<b>28</b>
<b>1.4 With T-shaped frame - h 55-65-85 mm</b>	<b>41</b>

# Available lifting methods

## Traditional

Using a **tapered plastic cap** with galvanised, stainless steel or brass screw.



## With a pull-out or retractable handle

A **patented** Gridiron system, it is particularly suitable whenever the manhole cover must be removed frequently.

The jointed handle, made of plastic and loaded with **fibreglass**, **lines up perfectly** with the **paving** thanks to a stainless steel pin, without hindering vehicle traffic. It can be installed on all models with a 50 mm height or more.



## Power-assisted lifting

Innovative and exclusive. A new addition to the Gridiron range, this solution makes a clean break with the lifting methods currently available on the market.

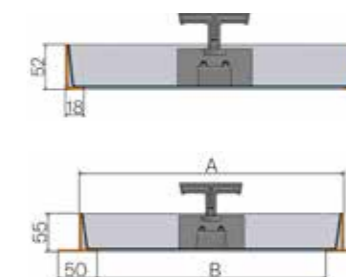
It is equipped with special **gas springs** that ensure **power-assisted** opening, allowing to **quickly** and **safely** inspect even very heavy manhole covers.



# Optional frame

## L-shaped or T-shaped

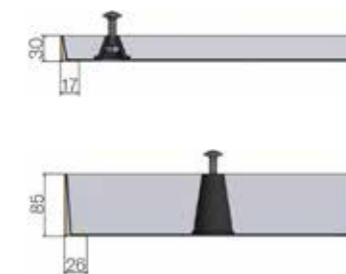
Combined with different sizes and lifting methods.



# Wide range of sizes

## Height from 30 mm to 150 mm

Available in endless combinations in terms of size, light and thickness, the range of standard sizes will meet all requirements.



# 1.1 Special manhole covers

Our know-how has enabled us to develop unique and exclusive models over time

## 1.1 Green

The "camouflage" manhole cover: ideal for being filled with turf, plants and flowers.

Characteristics:

- Increased depth (130 mm).
- **Draining basin** to ensure plant growth and prevent yellowing.
- It can be fully concealed and ensures continuity in the environment, which is why it comes in both the **galvanised** and **RAL 6005 (green)** coated version.



Drawing sizes in mm.

## 1.1 Green

### Green galvanised manhole cover

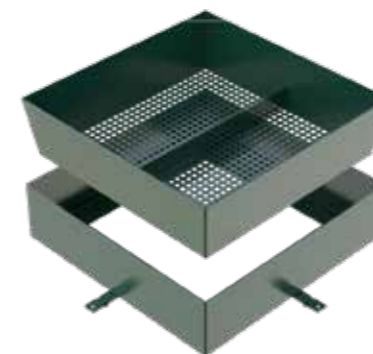


Recessed, hot-dip galvanised, made of pickled sheet metal Th. 30/10, inclusive of frame Th. 30/10 and side holes for lifting.  
N.B.: do not use adhesives or cleaners with a pH below 6 or above 11.

Code	Size mm	Clear opening	Thickness	Weight kg
7290	250×250 h130	150×150	30/10	10,34
7221	300×300 h130	200×200	30/10	12,45
7291	350×350 h130	250×250	30/10	14,68
7222	400×400 h130	300×300	30/10	17,03
7292	450×450 h130	350×350	30/10	19,50
7223	500×500 h130	400×400	30/10	22,10
7293	550×550 h130	450×450	30/10	24,82
7224	600×600 h130	500×500	30/10	27,66
7294*	650×650 h130	550×550	30/10	30,63
7225*	700×700 h130	600×600	30/10	33,72
7295*	750×750 h130	650×650	30/10	36,93

\* composed of a single frame and two internal filling basins.

### Green galvanised and RAL 6005 green-coated manhole cover



Recessed, hot-dip galvanised, made of pickled sheet metal Th. 30/10 with RAL 6005 green thermosetting polyester powder coating, inclusive of frame Th. 30/10 and side holes for lifting.  
N.B.: do not use adhesives or cleaners with a pH below 6 or above 11.

Code	Size mm	Clear opening	Thickness	Weight kg
7290V	250×250 h130	150×150	30/10	10,34
7221V	300×300 h130	200×200	30/10	12,45
7291V	350×350 h130	250×250	30/10	14,68
7222V	400×400 h130	300×300	30/10	17,03
7292V	450×450 h130	350×350	30/10	19,50
7223V	500×500 h130	400×400	30/10	22,10
7293V	550×550 h130	450×450	30/10	24,82
7224V	600×600 h130	500×500	30/10	27,66
7294V*	650×650 h130	550×550	30/10	30,63
7225V*	700×700 h130	600×600	30/10	33,72
7295V*	750×750 h130	650×650	30/10	36,93

\* composed of a single frame and two internal filling basins.

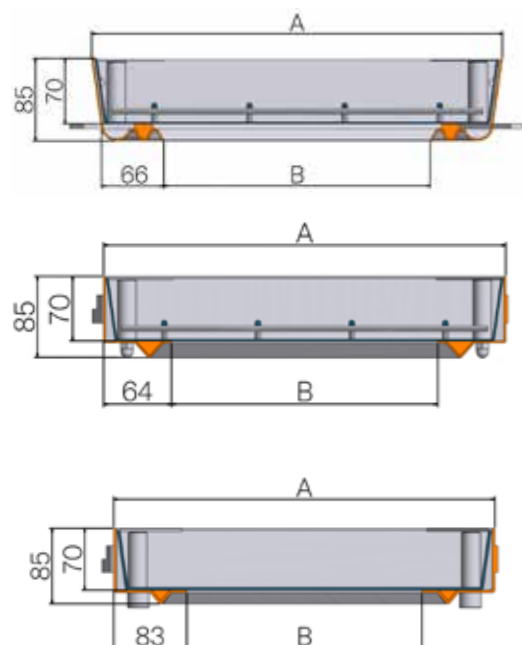
# 1.1 Special manhole covers

## 1.1 Key

The **waterproof manhole cover**: **foul odours** and **infiltrations** are no longer an issue thanks to one of the most technologically advanced Gridiron creations.

Characteristics:

- Press-formed sheet metal **frame** with the innovative **O-ring seal** and an **internal basin**.
- **Fastening bushes** placed at the corners, locking the basin to the frame and compressing the seal for a perfectly **watertight** effect.
- Supplied with a **kit** containing **two handles** of different lengths, to be used when **installing** the manhole cover to facilitate lifting (using both handles), and in case of **inspections** (the longer one is enough).
- The **bolts** are **fastened** permanently with the aid of a hex spanner.



Key galvanised  
Drawing sizes in mm.

Key stainless steel  
Drawing sizes in mm.

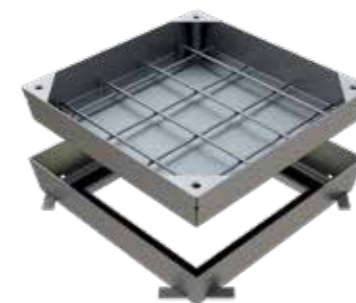
Key aluminium  
Drawing sizes in mm.



Lifting handles.

## 1.1 Key

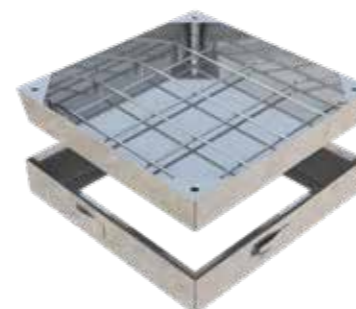
### Key galvanised manhole cover



Code	Size mm	Clear opening	Thickness	Weight kg
7101	430×430 h85	290×290	20/10	9,99
7102	530×530 h85	390×390	20/10	13,10
7103	630×630 h85	490×490	20/10	16,72
7104	730×730 h85	590×590	20/10	20,36
7105	830×830 h85	690×690	20/10	26,36

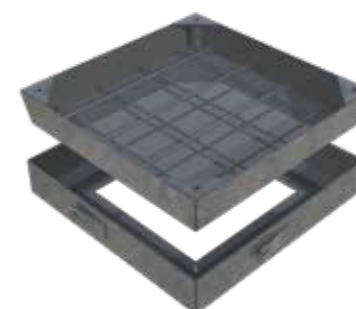
N.B.: do not use adhesives or cleaners with a pH below 6 or above 11.

### Key stainless steel manhole cover



Code	Size mm	Clear opening	Thickness	Weight kg
7101X	430×430 h85	290×290	20/10	9,99
7102X	530×530 h85	390×390	20/10	13,10
7103X	630×630 h85	490×490	20/10	16,72
7104X	730×730 h85	590×590	20/10	20,36
7105X	830×830 h85	690×690	20/10	26,36

### Key aluminium manhole cover



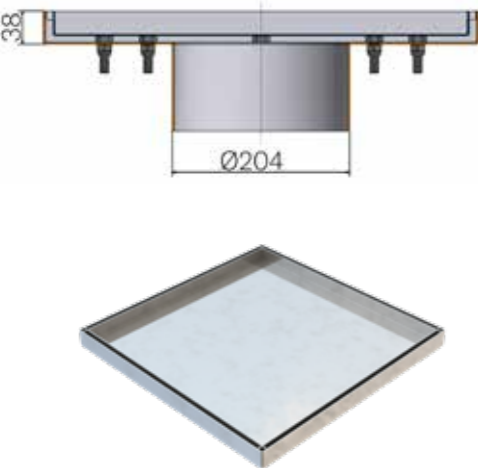
Code	Size mm	Clear opening	Thickness	Weight kg
7101A	430×430 h85	290×290	20/10	5,05
7102A	530×530 h85	390×390	20/10	6,58
7103A	630×630 h85	490×490	20/10	8,26
7104A	730×730 h85	590×590	20/10	10,10
7105A	830×830 h85	690×690	20/10	12,10

N.B.: do not use adhesives or cleaners with a pH below 6 or above 11.

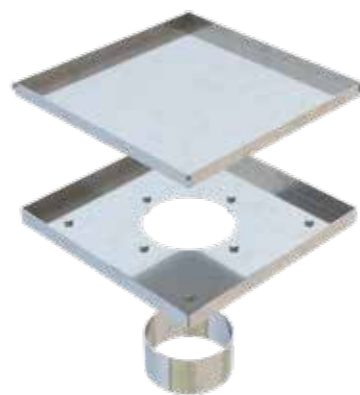
# 1.1 Special manhole covers

## 1.1 Funnel

Our **production flexibility** combines with our extensive **know-how** of **materials** and **intended uses** to produce unique models on the market. **Funnel** incorporates the characteristics of a **manhole cover**, namely its covering properties and those of a **waste**, since its funnel-shaped design creates a harmonious visual effect combined with an excellent draining power. Funnel is made of 20/10 **AISI 304 stainless steel** for unmatched **resistance** and **durability**, and is supplied complete with a **frame** and **central outlet** size Ø 204 mm.



Drawing sizes in mm.



Code	Size mm	Thickness	Weight kg
7230	500×500 h38	20/10	10,50

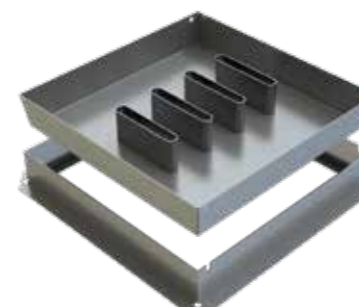
FUNNEL recessed manhole cover made of 20/10 AISI 304 stainless steel sheet, inclusive of frame and central drain size Ø 204 mm.  
N.B.: do not use adhesives or cleaners with a pH below 6 or above 11.

## 1.1 Storm

Another new addition to the Gridiron range: the **Storm** manhole cover. Our intention was to design the **perfect alternative** to traditional concrete gully gratings, for adapting to any paving surface and use. Once filled, Storm is perfectly camouflaged in the ground, without any detriment to its **ability to trap** and **channel** meteoric water, thanks to the presence of strategic slits. Storm is supplied with **hot-dip galvanised** sheet metal and includes a **frame**.



Drawing sizes in mm.



Code	Size mm	Outer mm	Clearopening	Thickness	Weight kg
5823	450×450 h85	515×515	400×400	20/10	11,70
5824	550×550 h85	615×615	500×500	20/10	15,50
5825	650×650 h85	715×715	600×600	20/10	19,10

STORM recessed gully grating made of hot-dip galvanised pickled 20/10 metal sheet, inclusive of T-shaped frame Th. 30/10, side holes for lifting and draining slots.  
N.B.: do not use adhesives or cleaners with a pH below 6 or above 11.

# 1.1 Special manhole covers

## 1.1 Valet

The range of Gridiron special manhole covers also includes the sophisticated Valet model which, with its **power-assisted lifting mechanism**, introduces on the market a new and unprecedented approach to the product.

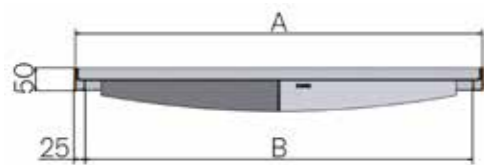
Valet comes with a **frame** and **gas springs**, and is made of **30/10 AISI 304 stainless steel sheet**, making it ideal for any environment, even in case of **erosion** by atmospheric agents, and in all sectors for which the **regulations** prescribe the exclusive use of this material.



## 1.1 Powerful

The Powerful manhole cover combines the optimal **visual impact** of Gridiron products with **exceptional performance**.

It can be used for large-size access points and in areas subject to intense traffic; moreover, thanks to its **high resistance to vehicle traffic**, it can also be installed in areas that need to be reached by fire-fighting vehicles. Lastly, thanks to the bushes on 4 sides, it guarantees entirely safe **mechanical lifting**.

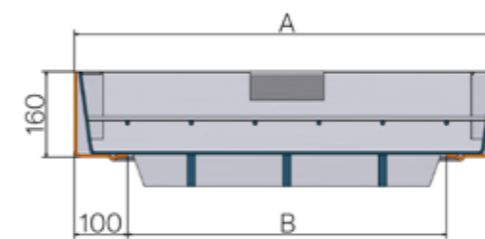


Drawing sizes in mm.



Code	Size mm	Clear opening	Thickness	Weight kg
7341X	850x850 h50	800x800	30/10	29,10
7340X	900x900 h50	850x850	30/10	33,30
7342X	1000x1000 h50	950x950	30/10	37,90

VALET 50 recessed manhole cover made of 30/10 AISI 304 stainless steel sheet, inclusive of frame and gas springs for power-assisted opening.  
N.B.: do not use adhesives or cleaners with a pH below 6 or above 11.



Drawing sizes in mm.



Code	Size mm	Clear opening	Thickness	Weight kg
7400	600x600 h160	400x400	50/10	59,59
7401	700x700 h160	500x500	50/10	74,25
7402	800x800 h160	600x600	50/10	98,11
7403	900x900 h160	700x700	50/10	115,98
7404	1000x1000 h160	800x800	50/10	139,92
7405	1200x1200 h160	1000x1000	50/10	202,57

Recessed manhole cover, made of 50/10 hot-dip galvanised sheet metal with lower reinforcements, inclusive of frame with seal and lifting bushes on the sides for M12 eye bolts. D400 load class.

N.B. 1: in order to obtain a **D400 load class**, the entire manhole cover must be filled with concrete:

- C25/30 XF2
- C28/35 XF4 in case of frost.

N.B. 2: do not use adhesives or cleaners with a pH below 6 or above 11.

# 1.2 Custom manhole covers



Thanks to the quick and efficient collaboration between the sales, technical and production departments, we are able to **design** and **manufacture** manhole covers of any **size** and **load-bearing capacity**.

The end result is a product that not only meets the customer's requirements, but is also meticulously **tested** and **certified** according to **sector regulations**.



Whatever the need, Gridiron supports the customer throughout all phases, from the design to the final installation of manhole covers **"tailored"** to the needs of any **customer**.

Please do not hesitate to contact us to share your **needs** and design your **ideal manhole cover** along with us.



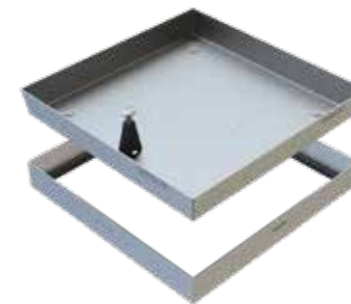


## 1.3 L-shaped frame — h 30 mm



Drawing sizes in mm.

### Low manhole cover

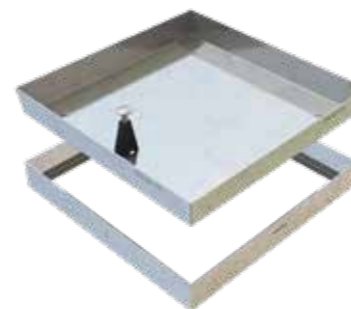


Code	Size mm	Clear opening	Thickness	Weight kg
<b>7241</b>	240×240 h30	200×200	8/10	0,84
<b>7243</b>	340×340 h30	300×300	8/10	1,39
<b>7245</b>	440×440 h30	400×400	8/10	2,07
<b>7247</b>	540×540 h30	500×500	8/10	2,87

Recessed, made of hot-dip pre-galvanised sheet metal Th. 8/10, inclusive of frame Th. 8/10 and cap with screw for lifting.

N.B.: do not use adhesives or cleaners with a pH below 6 or above 11.

### Lowinox manhole cover

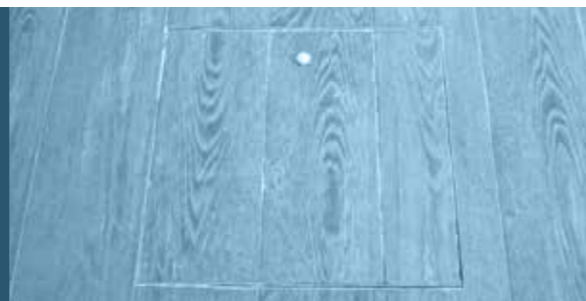


Code	Size mm	Clear opening	Thickness	Weight kg
<b>7261</b>	240×240 h30	200×200	8/10	0,84
<b>7263</b>	340×340 h30	300×300	8/10	1,39
<b>7265</b>	440×440 h30	400×400	8/10	2,07
<b>7267</b>	540×540 h30	500×500	8/10	2,87

Recessed, made of AISI 304 stainless steel sheet Th. 8/10, inclusive of stainless steel frame Th. 8/10 and cap with stainless steel screw for lifting.

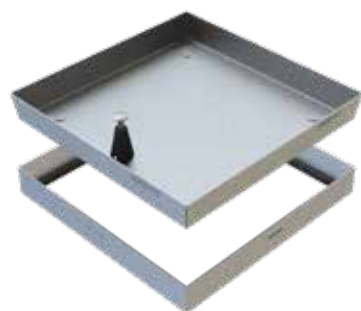


## 1.3 L-shaped frame — h 50 mm



Drawing sizes in mm.

### Jolly manhole cover

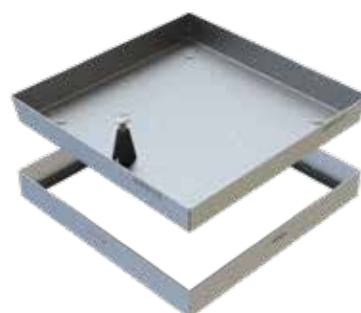


Code	Size mm	Clear opening	Thickness	Weight kg
7001	240×240 h52	200×200	12/10	1,62
7002	340×340 h52	300×300	12/10	2,38
7003	440×440 h52	400×400	12/10	3,34
7004	540×540 h52	500×500	12/10	5,28
7025	640×640 h52	600×600	15/10	7,90

Recessed, made of hot-dip pre-galvanised sheet metal Th. 12/10, inclusive of frame Th. 15/10 and cap with screw for lifting.

N.B.: do not use adhesives or cleaners with a pH below 6 or above 11.

### Job manhole cover



Code	Size mm	Clear opening	Thickness	Weight kg
7031	200×200 h52	160×160	15/10	1,35
7021	240×240 h52	200×200	15/10	1,79
7032	300×300 h52	260×260	15/10	2,45
7022	340×340 h52	300×300	15/10	3,05
7033	400×400 h52	360×360	15/10	3,52
7023	440×440 h52	400×400	15/10	4,39
7034	500×500 h52	460×460	15/10	5,49
7024	540×540 h52	500×500	15/10	5,98
7035	600×600 h52	560×560	15/10	6,92
7025	640×640 h52	600×600	15/10	7,90
7036	700×700 h52	660×660	15/10	9,00
7026	740×740 h52	700×700	15/10	10,20
7027	840×840 h52	800×800	15/10	12,50

Recessed, made of hot-dip pre-galvanised sheet metal Th. 15/10, inclusive of frame Th. 15/10 and cap with screw for lifting.

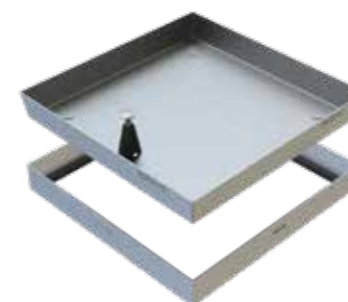
N.B.: do not use adhesives or cleaners with a pH below 6 or above 11.

## 1.3 L-shaped frame — h 50 mm



Drawing sizes in mm.

### Color manhole cover



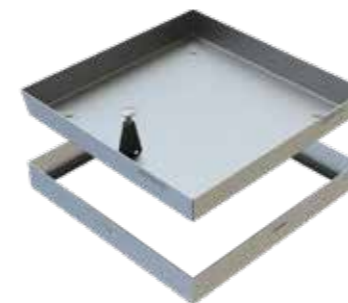
Code	Size mm	Clear opening	Thickness	Weight kg
7041	240×240 h52	200×200	15/10	1,79
7042	340×340 h52	300×300	15/10	3,05
7043	440×440 h52	400×400	15/10	4,39
7044	540×540 h52	500×500	15/10	6,30
7045	640×640 h52	500×500	15/10	7,90

Supplied in 6-piece packs.

Recessed, made of hot-dip pre-galvanised sheet metal Th. 15/10, with thermosetting polyester powder coating, inclusive of frame Th. 15/10 and cap with screw for lifting.

N.B.: do not use adhesives or cleaners with a pH below 6 or above 11.

### Ermetico manhole cover



Code	Size mm	Clear opening	Thickness	Weight kg
5113	240×240 h52	200×200	15/10	1,87
5114	340×340 h52	300×300	15/10	3,24
5115	440×440 h52	400×400	15/10	4,72
5116	540×540 h52	500×500	15/10	6,69
5117	640×640 h52	600×600	15/10	8,36

Supplied in 6-piece packs.

Recessed, made of hot-dip pre-galvanised sheet metal Th. 15/10, with thermosetting polyester powder coating, inclusive of frame Th. 15/10, seal and cap with screw for lifting.

N.B.: do not use adhesives or cleaners with a pH below 6 or above 11.

## 1.3 L-shaped frame — h 50 mm



Drawing sizes in mm.

### Ottone manhole cover

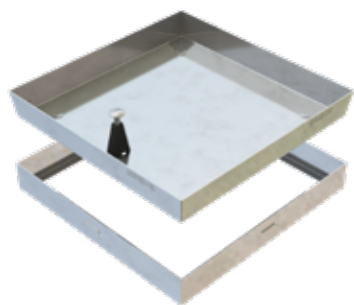


Code	Size mm	Clear opening	Thickness	Weight kg
5501	240×240 h52	200×200	15/10	1,63
5502	340×340 h52	300×300	15/10	3,16
5503	440×440 h52	400×400	15/10	4,72
5504	540×540 h52	500×500	15/10	6,58
5505	640×640 h52	600×600	15/10	7,04

Supplied in 6-piece packs.

Recessed, made of polished brass sheet metal Th. 15/10, inclusive of frame Th. 15/10 and cap with screw for lifting. N.B.: do not use adhesives or cleaners with a pH below 6 or above 11.

### Inox manhole cover

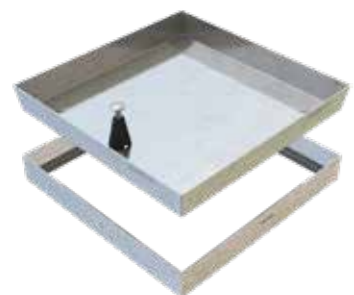


Code	Size mm	Clear opening	Thickness	Weight kg
7111	240×240 h52	200×200	15/10	1,79
7112	340×340 h52	300×300	15/10	3,05
7113	440×440 h52	400×400	15/10	4,39
7114	540×540 h52	500×500	15/10	6,30
7115	640×640 h52	600×600	15/10	7,90

Supplied in 6-piece packs.

Recessed, made of polished AISI 304 stainless steel sheet metal Th. 15/10, inclusive of frame Th. 15/10 and cap with stainless steel screw for lifting.

### Finox manhole cover

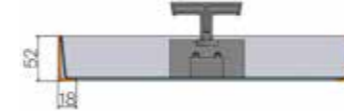


Code	Size mm	Clear opening	Thickness	Weight kg
7201	240×240 h52	200×200	8/10	1,02
7202	340×340 h52	300×300	8/10	1,64
7203	440×440 h52	400×400	8/10	2,38
7204	540×540 h52	500×500	8/10	3,21
7205	640×640 h52	600×600	8/10	4,28

Supplied in 6-piece packs.

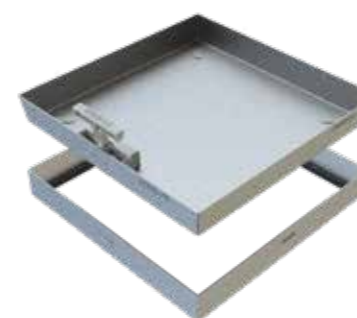
Recessed, made of AISI 304 stainless steel sheet metal Th. 8/10, inclusive of frame Th. 8/10 and cap with stainless steel screw for lifting.

## 1.3 L-shaped frame and handle — h 50 mm



Drawing sizes in mm.

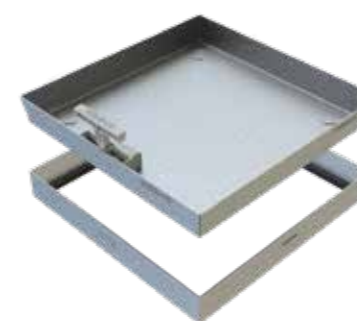
### Step manhole cover



Code	Size mm	Clear opening	Thickness	Weight kg
7006	240×240 h52	200×200	12/10	1,62
7007	340×340 h52	300×300	12/10	2,38
7008	440×440 h52	400×400	12/10	3,34
7009	540×540 h52	500×500	12/10	5,28
7125	640×640 h52	600×600	15/10	7,90

Recessed, made of hot-dip pre-galvanised sheet metal Th. 12/10, inclusive of frame Th. 15/10 and patented lifting system with pull-out handle. N.B.: do not use adhesives or cleaners with a pH below 6 or above 11.

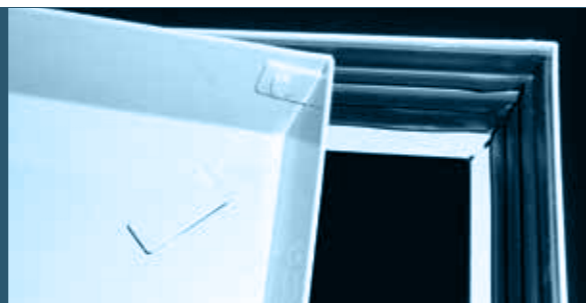
### Jet manhole cover



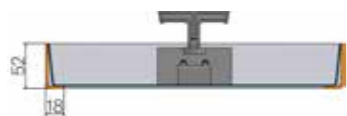
Code	Size mm	Clear opening	Thickness	Weight kg
7131	200×200 h52	160×160	15/10	1,35
7121	240×240 h52	200×200	15/10	1,79
7132	300×300 h52	260×260	15/10	2,45
7122	340×340 h52	300×300	15/10	3,05
7133	400×400 h52	360×360	15/10	3,52
7123	440×440 h52	400×400	15/10	4,39
7134	500×500 h52	460×460	15/10	5,49
7124	540×540 h52	500×500	15/10	5,98
7135	600×600 h52	560×560	15/10	6,92
7125	640×640 h52	600×600	15/10	7,90
7136	700×700 h52	660×660	15/10	9,00
7126	740×740 h52	700×700	15/10	10,20
7127	840×840 h52	800×800	15/10	12,50

Recessed, made of hot-dip pre-galvanised sheet metal Th. 15/10, inclusive of frame Th. 15/10 and patented lifting system with pull-out handle. N.B.: do not use adhesives or cleaners with a pH below 6 or above 11.

## 1.3 L-shaped frame and handle – h 50 mm

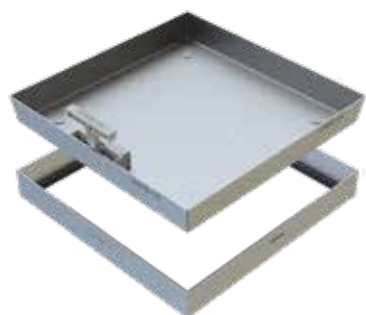


Detail of the watertight seal inserted in the frame of "Ermetico" and "Eco" manhole covers.



Drawing sizes in mm.

### Strike manhole cover

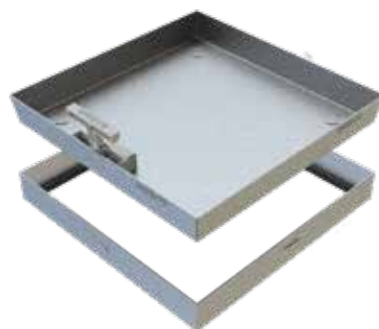


Code	Size mm	Clear opening	Thickness	Weight kg
7141	240×240 h52	200×200	15/10	1,79
7142	340×340 h52	300×300	15/10	3,05
7143	440×440 h52	400×400	15/10	4,39
7144	540×540 h52	500×500	15/10	6,30
7145	640×640 h52	600×600	15/10	7,90

Supplied in 6-piece packs.

Recessed, made of hot-dip pre-galvanised sheet metal Th. 15/10, with thermosetting polyester powder coating, inclusive of frame Th. 15/10 and **patented** lifting system with pull-out handle. N.B.: do not use adhesives or cleaners with a pH below 6 or above 11.

### Eco manhole cover



Code	Size mm	Clear opening	Thickness	Weight kg
7081	240×240 h52	200×200	15/10	1,87
7082	340×340 h52	300×300	15/10	3,24
7083	440×440 h52	400×400	15/10	4,72
7084	540×540 h52	500×500	15/10	6,69
7085	640×640 h52	600×600	15/10	8,36

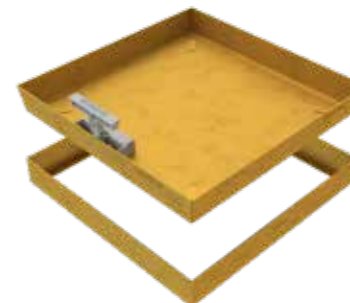
Supplied in 6-piece packs.

Recessed, made of hot-dip pre-galvanised sheet metal Th. 15/10, with thermosetting polyester powder coating, inclusive of frame Th. 15/10, seal and **patented** lifting system with pull-out handle. N.B.: do not use adhesives or cleaners with a pH below 6 or above 11.

## 1.3 L-shaped frame and handle – h 50 mm



### Sirio manhole cover

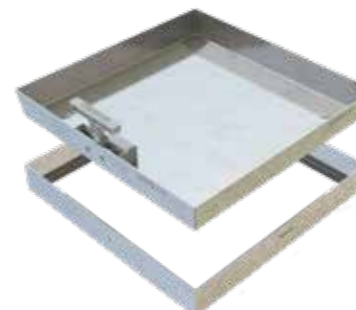


Code	Size mm	Clear opening	Thickness	Weight kg
7091	240×240 h52	200×200	15/10	1,63
7092	340×340 h52	300×300	15/10	3,16
7093	440×440 h52	400×400	15/10	4,72
7094	540×540 h52	500×500	15/10	6,58
7095	640×640 h52	600×600	15/10	7,04

Supplied in 6-piece packs.

Recessed, made of polished brass sheet metal Th. 15/10, inclusive of frame Th. 15/10 and **patented** lifting system with pull-out handle. N.B.: do not use adhesives or cleaners with a pH below 6 or above 11.

### Brill manhole cover

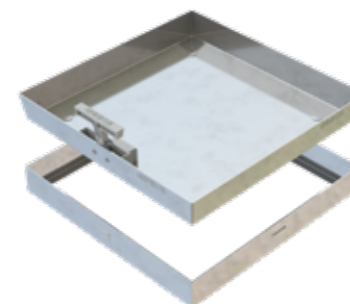


Code	Size mm	Clear opening	Thickness	Weight kg
7151	240×240 h52	200×200	15/10	1,79
7152	340×340 h52	300×300	15/10	3,05
7153	440×440 h52	400×400	15/10	4,39
7154	540×540 h52	500×500	15/10	6,30
7155	640×640 h52	600×600	15/10	7,90

Supplied in 6-piece packs.

Recessed, made of polished AISI 304 stainless steel sheet metal Th. 15/10, inclusive of frame Th. 15/10 and **patented** lifting system with pull-out handle. N.B.: do not use adhesives or cleaners with a pH below 6 or above 11.

### Top manhole cover

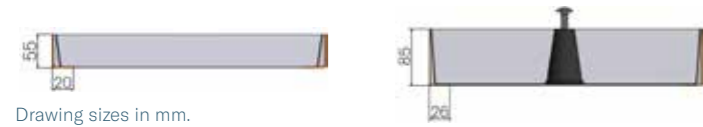
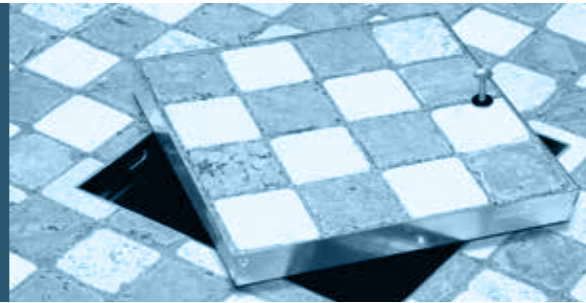


Code	Size mm	Clear opening	Thickness	Weight kg
7211	240×240 h52	200×200	8/10	1,02
7212	340×340 h52	300×300	8/10	1,64
7213	440×440 h52	400×400	8/10	2,38
7214	540×540 h52	500×500	8/10	3,21
7215	640×640 h52	600×600	8/10	4,28

Supplied in 6-piece packs.

Recessed, made of AISI 304 stainless steel sheet metal Th. 8/10, inclusive of frame Th. 8/10 and **patented** lifting system with pull-out handle. N.B.: do not use adhesives or cleaners with a pH below 6 or above 11.

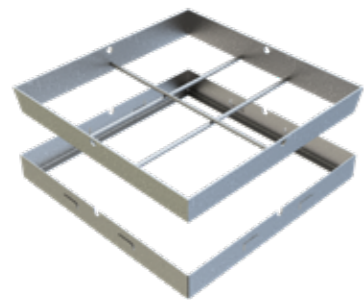
## 1.3 L-shaped frame — h 55 mm — 85 mm



Drawing sizes in mm.



### Slim h55 manhole cover



Code	Size mm	Clear opening	Thickness	Weight kg
<b>7071</b>	240×240 h55	200×200	35/10	2,70
<b>7072</b>	340×340 h55	300×300	35/10	3,62
<b>7073</b>	440×440 h55	400×400	35/10	4,99
<b>7074</b>	540×540 h55	500×500	35/10	6,45
<b>7075</b>	640×640 h55	600×600	35/10	7,55

Recessed, hot-dip galvanised, made of pickled sheet metal Th. 35/10 without bottom, with rods, inclusive of frame Th. 20/10 and side holes for lifting.  
N.B.: do not use adhesives or cleaners with a pH below 6 or above 11.

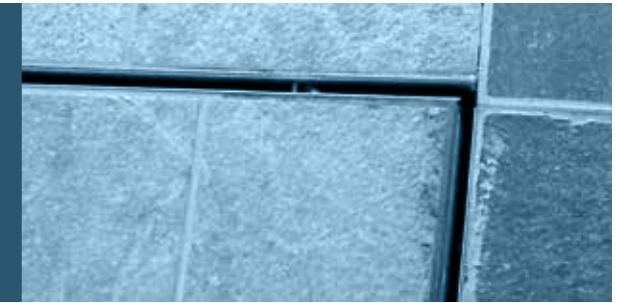
### Joker h85 manhole cover



Code	Size mm	Clear opening	Thickness	Weight kg
<b>7161</b>	200×200 h85	150×150	15/10	2,04
<b>7011</b>	250×250 h85	200×200	15/10	2,56
<b>7162</b>	300×300 h85	250×250	15/10	3,29
<b>7012</b>	350×350 h85	300×300	15/10	4,08
<b>7163</b>	400×400 h85	350×350	15/10	4,86
<b>7013</b>	450×450 h85	400×400	15/10	5,78
<b>7164</b>	500×500 h85	450×450	15/10	6,73
<b>7014</b>	550×550 h85	500×500	15/10	7,75
<b>7165</b>	600×600 h85	550×550	15/10	8,62
<b>7015</b>	650×650 h85	600×600	15/10	10,06

For self-locking and cobblestone paving, made of hot-dip pre-galvanised sheet metal Th. 15/10, inclusive of frame Th. 15/10, side holes and cap with screw for lifting.  
N.B.: do not use adhesives or cleaners with a pH below 6 or above 11.

## 1.3 L-shaped frame — h 85 mm



Drawing sizes in mm.



### Jokinox h85 manhole cover



Code	Size mm	Clear opening	Thickness	Weight kg
<b>7011X</b>	250×250 h85	200×200	15/10	2,56
<b>7012X</b>	350×350 h85	300×300	15/10	4,08
<b>7013X</b>	450×450 h85	400×400	15/10	5,78
<b>7014X</b>	550×550 h85	500×500	15/10	7,75
<b>7015X</b>	650×650 h85	600×600	15/10	10,06

For self-locking and cobblestone paving, made of polished AISI 304 stainless steel sheet metal Th. 15/10, inclusive of frame Th. 15/10 and cap with stainless steel screw for lifting.

### Pesante manhole cover

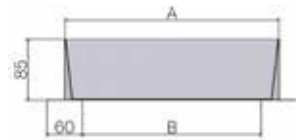


Code	Size mm	Clear opening	Thickness	Weight kg
<b>5591</b>	200×200 h85	150×150	20/10	2,90
<b>5018</b>	250×250 h85	200×200	20/10	3,60
<b>5592</b>	300×300 h85	250×250	20/10	5,02
<b>5019</b>	350×350 h85	300×300	20/10	5,60
<b>5593</b>	400×400 h85	350×350	20/10	7,34
<b>5020</b>	450×450 h85	400×400	20/10	8,50
<b>5594</b>	500×500 h85	450×450	20/10	9,72
<b>5021</b>	550×550 h85	500×500	20/10	11,00
<b>5595</b>	600×600 h85	550×550	20/10	12,85
<b>5022</b>	650×650 h85	600×600	20/10	15,50
<b>5596</b>	700×700 h85	650×650	20/10	16,30
<b>5023*</b>	750×750 h85	700×700	20/10	18,10

For self-locking and cobblestone paving, hot-dip galvanised, made of pickled sheet metal Th. 20/10, inclusive of frame Th. 20/10 and side holes for lifting.  
N.B.: do not use adhesives or cleaners with a pH below 6 or above 11.

\* composed of a single frame and two internal filling basins

## 1.3 L-shaped frame — 85 mm



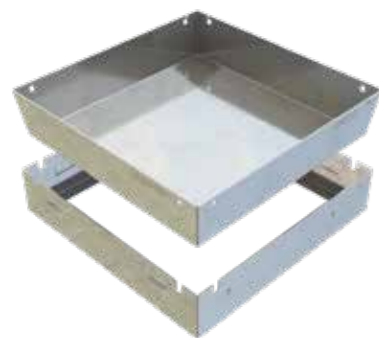
Drawing sizes in mm.



Code  
**7011M**

Hook for lifting.

### Pesantinox manhole cover



For self-locking and cobblestone paving, made of AISI 304 stainless steel sheet metal Th. 20/10, inclusive of frame Th. 20/10 and side holes for lifting.

Code	Size mm	Clear opening	Thickness	Weight kg
<b>5591X</b>	200×200 h85	150×150	20/10	2,90
<b>5018X</b>	250×250 h85	200×200	20/10	3,60
<b>5592X</b>	300×300 h85	250×250	20/10	5,02
<b>5019X</b>	350×350 h85	300×300	20/10	5,60
<b>5593X</b>	400×400 h85	350×350	20/10	7,34
<b>5020X</b>	450×450 h85	400×400	20/10	8,50
<b>5594X</b>	500×500 h85	450×450	20/10	9,72
<b>5021X</b>	550×550 h85	500×500	20/10	11,00
<b>5595X</b>	600×600 h85	550×550	20/10	12,85
<b>5022X</b>	650×650 h85	600×600	20/10	15,50
<b>5596X</b>	700×700 h85	650×650	20/10	16,30
<b>5023X*</b>	750×750 h85	700×700	20/10	18,10

\* composed of a single frame and two internal filling basins

## 1.3 L-shaped frame and handle — h 85 mm



Drawing sizes in mm.



Code  
**7011M**

Hook for lifting.

### Star h85 manhole cover



For self-locking and cobblestone paving, made of hot-dip pre-galvanised sheet metal Th. 15/10, inclusive of frame Th. 15/10, **patented** lifting system with retractable handle and side holes. N.B.: do not use adhesives or cleaners with a pH below 6 or above 11.

Code	Size mm	Clear opening	Thickness	Weight kg
<b>7171</b>	200×200 h85	150×150	15/10	2,04
<b>7050</b>	250×250 h85	200×200	15/10	2,56
<b>7172</b>	300×300 h85	250×250	15/10	3,29
<b>7051</b>	350×350 h85	300×300	15/10	4,08
<b>7173</b>	400×400 h85	350×350	15/10	4,86
<b>7052</b>	450×450 h85	400×400	15/10	5,78
<b>7174</b>	500×500 h85	450×450	15/10	6,73
<b>7053</b>	550×550 h85	500×500	15/10	7,75
<b>7175</b>	600×600 h85	550×550	15/10	8,62
<b>7054</b>	650×650 h85	600×600	15/10	10,06

### Starinox h85 manhole cover



For self-locking and cobblestone paving, made of polished AISI 304 stainless steel sheet metal Th. 15/10, inclusive of frame Th. 15/10, **patented** lifting system with retractable handle and side holes.

Code	Size mm	Clear opening	Thickness	Weight kg
<b>7050X</b>	250×250 h85	200×200	15/10	2,56
<b>7051X</b>	350×350 h85	300×300	15/10	4,08
<b>7052X</b>	450×450 h85	400×400	15/10	5,78
<b>7053X</b>	550×550 h85	500×500	15/10	7,75
<b>7054X</b>	650×650 h85	600×600	15/10	10,06

## 1.3 L-shaped frame and handle – h 85 mm



Drawing sizes in mm.



Code  
**7011M**

Hook for lifting.

### Vip manhole cover



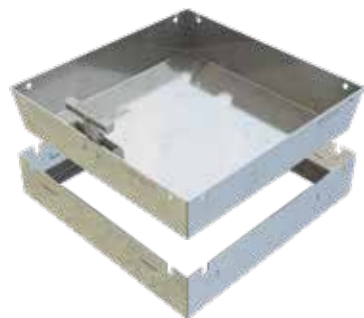
For self-locking and cobblestone paving, hot-dip galvanised, made of pickled sheet metal Th. 20/10, inclusive of frame Th. 20/10, **patented** lifting system with retractable handle and side holes.

N.B.: do not use adhesives or cleaners with a pH below 6 or above 11.

Code	Size mm	Clear opening	Thickness	Weight kg
<b>7191</b>	200×200 h85	150×150	20/10	2,90
<b>7061</b>	250×250 h85	200×200	20/10	3,60
<b>7192</b>	300×300 h85	250×250	20/10	5,02
<b>7062</b>	350×350 h85	300×300	20/10	5,60
<b>7193</b>	400×400 h85	350×350	20/10	7,34
<b>7063</b>	450×450 h85	400×400	20/10	8,50
<b>7194</b>	500×500 h85	450×450	20/10	9,72
<b>7064</b>	550×550 h85	500×500	20/10	11,00
<b>7195</b>	600×600 h85	550×550	20/10	12,85
<b>7065</b>	650×650 h85	600×600	20/10	15,50
<b>7196</b>	700×700 h85	650×650	20/10	16,30
<b>7066*</b>	750×750 h85	700×700	20/10	18,10

\* composed of a single frame and two internal filling basins

### Vipinox manhole cover

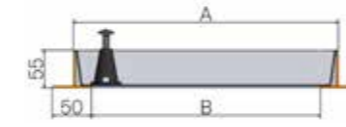


For self-locking and cobblestone paving, made of AISI 304 stainless steel sheet metal Th. 20/10, inclusive of frame Th. 20/10, **patented** lifting system with retractable handle and side holes.

Code	Size mm	Clear opening	Thickness	Weight kg
<b>7191X</b>	200×200 h85	150×150	20/10	2,90
<b>7061X</b>	250×250 h85	200×200	20/10	3,60
<b>7192X</b>	300×300 h85	250×250	20/10	5,02
<b>7062X</b>	350×350 h85	300×300	20/10	5,60
<b>7193X</b>	400×400 h85	350×350	20/10	7,34
<b>7063X</b>	450×450 h85	400×400	20/10	8,50
<b>7194X</b>	500×500 h85	450×450	20/10	9,72
<b>7064X</b>	550×550 h85	500×500	20/10	11,00
<b>7195X</b>	600×600 h85	550×550	20/10	12,85
<b>7065X</b>	650×650 h85	600×600	20/10	15,50
<b>7196X</b>	700×700 h85	650×650	20/10	16,30
<b>7066X*</b>	750×750 h85	700×700	20/10	18,10

\* composed of a single frame and two internal filling basins

## 1.4 T-shaped frame – 55 mm



Drawing sizes in mm.



Code  
**7011M**

Hook for lifting.

### Sub manhole cover



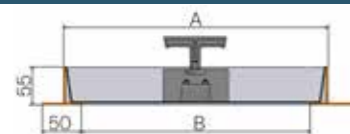
For self-locking and cobblestone paving, hot-dip galvanised, made of pickled sheet metal Th. 20/10, inclusive of frame Th. 20/10 and cap with screw for lifting.

N.B.: do not use adhesives or cleaners with a pH below 6 or above 11.

Code	Size mm	Clear opening	Thickness	Weight kg
<b>7281</b>	200×200 h55	150×150	20/10	3,06
<b>7271</b>	250×250 h55	200×200	20/10	4,69
<b>7282</b>	300×300 h55	250×250	20/10	6,00
<b>7272</b>	350×350 h55	300×300	20/10	7,21
<b>7283</b>	400×400 h55	350×350	20/10	8,88
<b>7273</b>	450×450 h55	400×400	20/10	10,16
<b>7284</b>	500×500 h55	450×450	20/10	11,84
<b>7274</b>	550×550 h55	500×500	20/10	13,42
<b>7285</b>	600×600 h55	550×550	20/10	15,14
<b>7275</b>	650×650 h55	600×600	20/10	16,86
<b>7286</b>	700×700 h55	650×650	20/10	19,56
<b>7276*</b>	750×750 h55	700×700	20/10	22,46

\* composed of a single frame and two internal filling basins

# 1.4 T-shaped frame and handle – h 55 mm



Drawing sizes in mm.



Code  
**7011M**

Hook for lifting.

## Dive manhole cover

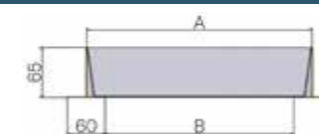


For self-locking and cobblestone paving, hot-dip galvanised, made of pickled sheet metal Th. 20/10, inclusive of frame Th. 20/10, **patented** lifting system with pull-out handle. N.B.: do not use adhesives or cleaners with a pH below 6 or above 11.

Code	Size mm	Clear opening	Thickness	Weight kg
<b>7281M</b>	200×200 h55	150×150	20/10	3,06
<b>7271M</b>	250×250 h55	200×200	20/10	4,69
<b>7282M</b>	300×300 h55	250×250	20/10	6,00
<b>7272M</b>	350×350 h55	300×300	20/10	7,21
<b>7283M</b>	400×400 h55	350×350	20/10	8,88
<b>7273M</b>	450×450 h55	400×400	20/10	10,16
<b>7284M</b>	500×500 h55	450×450	20/10	11,84
<b>7274M</b>	550×550 h55	500×500	20/10	13,42
<b>7285M</b>	600×600 h55	550×550	20/10	15,14
<b>7275M</b>	650×650 h55	600×600	20/10	16,86
<b>7286M</b>	700×700 h55	650×650	20/10	19,56
<b>7276M*</b>	750×750 h55	700×700	20/10	22,46

\* composed of a single frame and two internal filling basins

# 1.4 T-shaped frame – 65 mm



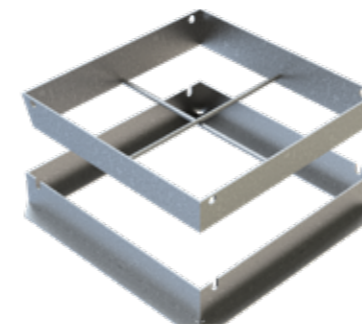
Drawing sizes in mm.



Code  
**7011M**

Hook for lifting.

## Kris h65 manhole cover



Recessed, hot-dip galvanised, made of pickled sheet metal, without bottom, with rods, inclusive of T-shaped frame Th. 30/10 and side holes for lifting. N.B.: do not use adhesives or cleaners with a pH below 6 or above 11.

Code	Size mm	Clear opening	Thickness	Weight kg
<b>5880</b>	200×200 h65	140×140	35/10	3,02
<b>5881</b>	300×300 h65	240×240	35/10	4,95
<b>5882</b>	400×400 h65	340×340	35/10	7,98
<b>5883</b>	500×500 h65	440×440	35/10	10,08
<b>5884</b>	600×600 h65	540×540	35/10	12,62

## Hard h65 manhole cover

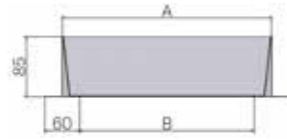
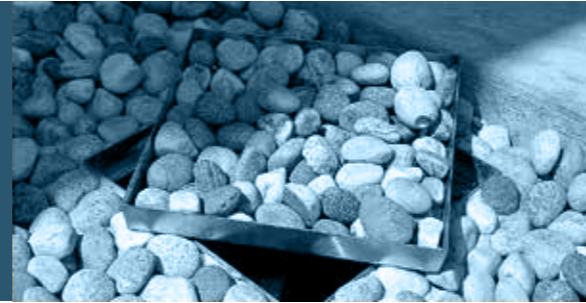


For self-locking and cobblestone paving, hot-dip galvanised, made of pickled sheet metal Th. 20/10, with T-shaped frame Th. 30/10 and side holes for lifting. N.B.: do not use adhesives or cleaners with a pH below 6 or above 11.

Code	Size mm	Clear opening	Thickness	Weight kg
<b>5870</b>	200×200 h65	140×140	20/10	3,53
<b>5861</b>	250×250 h65	190×190	20/10	4,43
<b>5871</b>	300×300 h65	240×240	20/10	4,97
<b>5862</b>	350×350 h65	290×290	20/10	6,28
<b>5872</b>	400×400 h65	340×340	20/10	7,17
<b>5863</b>	450×450 h65	390×390	20/10	8,67
<b>5873</b>	500×500 h65	440×440	20/10	10,22
<b>5864</b>	550×550 h65	490×490	20/10	11,48
<b>5874</b>	600×600 h65	540×540	20/10	13,35
<b>5865</b>	650×650 h65	590×590	20/10	15,02
<b>5875</b>	700×700 h65	640×640	20/10	16,31
<b>5866*</b>	750×750 h65	690×690	20/10	18,18

\* composed of a single frame and two internal filling basins

# 1.4 T-shaped frame — 85 mm



Drawing sizes in mm.



Code  
**7011M**

Hook for lifting

## Deep 85 manhole cover

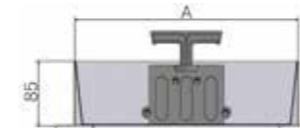
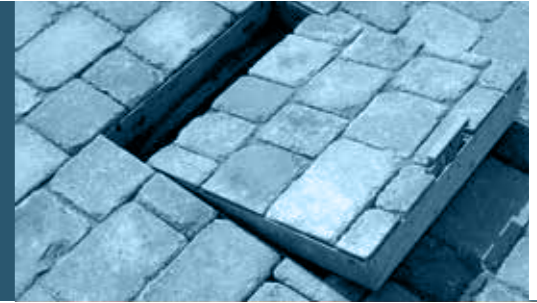


Code	Size mm	Clear opening	Thickness	Weight kg
<b>5840</b>	200×200 h85	140×140	20/10	4,06
<b>5831</b>	250×250 h85	190×190	20/10	5,27
<b>5841</b>	300×300 h85	240×240	20/10	6,73
<b>5832</b>	350×350 h85	290×290	20/10	7,98
<b>5842</b>	400×400 h85	340×340	20/10	9,58
<b>5833</b>	450×450 h85	390×390	20/10	11,03
<b>5843</b>	500×500 h85	440×440	20/10	13,04
<b>5834</b>	550×550 h85	490×490	20/10	14,30
<b>5844</b>	600×600 h85	540×540	20/10	16,78
<b>5835</b>	650×650 h85	590×590	20/10	17,86
<b>5845</b>	700×700 h85	640×640	20/10	21,60
<b>5836*</b>	750×750 h85	690×690	20/10	23,86

For self-locking and cobblestone paving, hot-dip galvanised, made of pickled sheet metal Th. 20/10, with T-shaped frame Th. 30/10 and side holes for lifting.  
N.B.: do not use adhesives or cleaners with a pH below 6 or above 11.

\* composed of a single frame and two internal filling basins

# 1.4 T-shaped frame and handle — h 85 mm



Drawing sizes in mm.



Code  
**7011M**

Hook for lifting

## Ciak 85 manhole cover



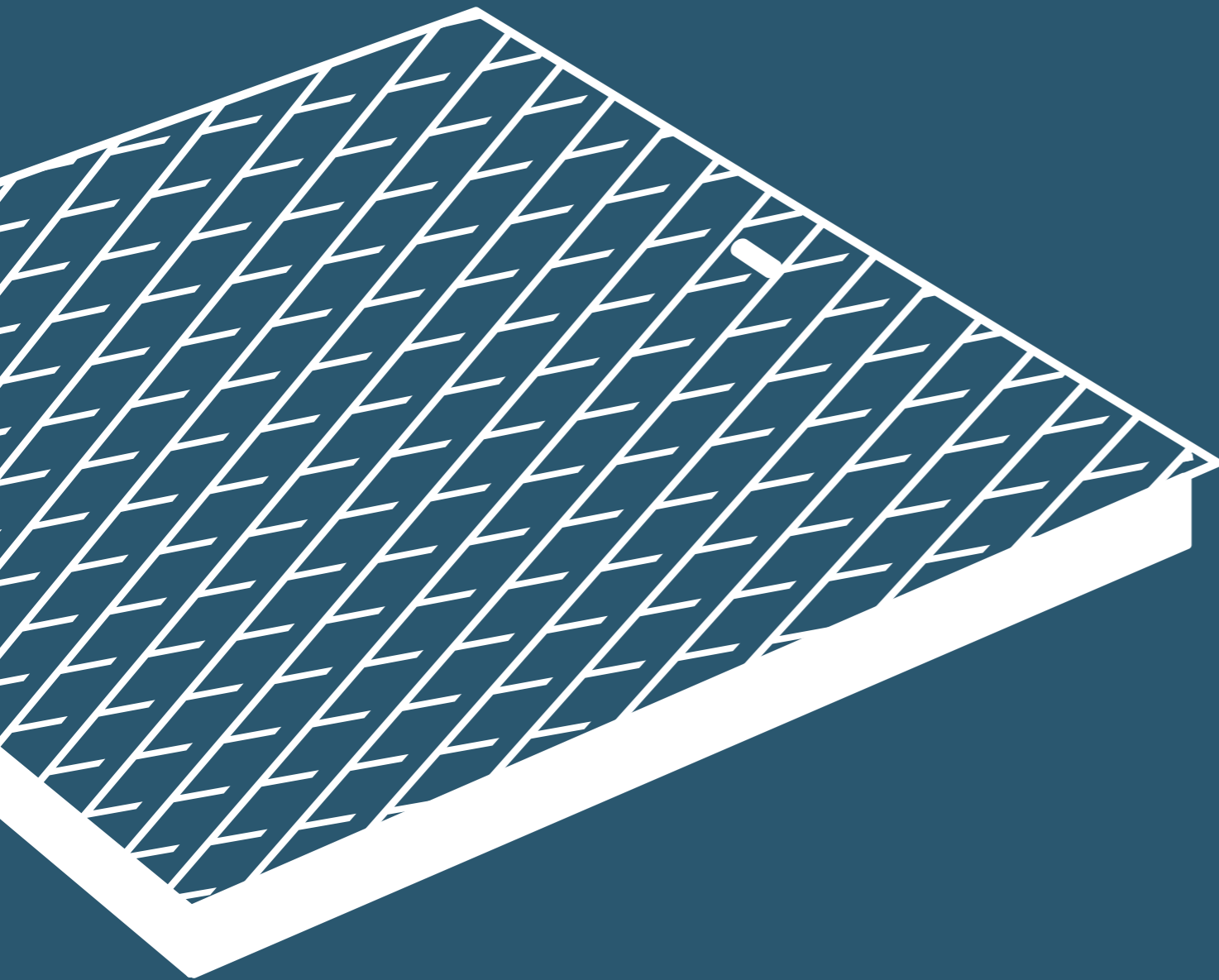
Code	Size mm	Clear opening	Thickness	Weight kg
<b>5840M</b>	200×200 h85	140×140	20/10	4,06
<b>5831M</b>	250×250 h85	190×190	20/10	5,27
<b>5841M</b>	300×300 h85	240×240	20/10	6,73
<b>5832M</b>	350×350 h85	290×290	20/10	7,98
<b>5842M</b>	400×400 h85	340×340	20/10	9,58
<b>5833M</b>	450×450 h85	390×390	20/10	11,03
<b>5843M</b>	500×500 h85	440×440	20/10	13,04
<b>5834M</b>	550×550 h85	490×490	20/10	14,30
<b>5844M</b>	600×600 h85	540×540	20/10	16,78
<b>5835M</b>	650×650 h85	590×590	20/10	17,86
<b>5845M</b>	700×700 h85	640×640	20/10	21,60
<b>5836M*</b>	750×750 h85	690×690	20/10	23,86

For self-locking and cobblestone paving, hot-dip galvanised, made of pickled sheet metal Th. 20/10, with T-shaped frame Th. 30/10, **patented** lifting system with retractable handle and side holes.  
N.B.: do not use adhesives or cleaners with a pH below 6 or above 11.

\* composed of a single frame and two internal filling basins



# 2. Plates



Gridiron. Building accessories.

2. Plates

Gridiron plates are one of the company's **historical products** and are still one of our **best-sellers**.

The hot-dip **galvanisation** with a **thicker** than average treatment and refined workmanship make this a **unique product** on the market, available in a wide range of **sizes** and **load-bearing capacities**.

<b>2.1</b> Base plates and well covers: pedestrian areas	48
<b>2.2</b> Professional plates: urban areas, streets and highways	52

2. Plates

## 2.1 Basic plates and well covers

### Pedestrian areas



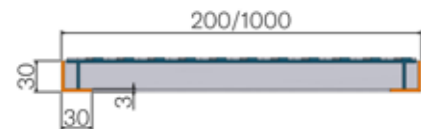
Drawing sizes in mm.

### Elettra h12 plate



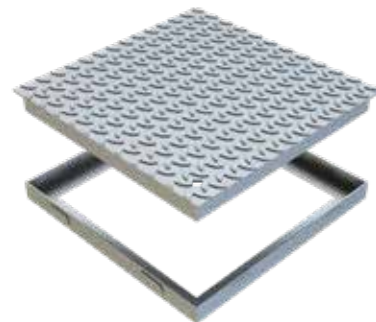
Made of hot-dip galvanised 3+2 chequered metal sheet, inclusive of L-shaped iron frame size 20x12x4.

Code	Size mm	Clear opening	Weight kg	Load class
5010	250x250 h12	210x210	1,44	A15
5011	350x350 h12	310x310	4,53	
5012	450x450 h12	410x410	7,30	
5420	550x550 h12	510x510	11,19	
5421	650x650 h12	610x610	14,67	



Drawing sizes in mm.

### Cuneo h30 plate

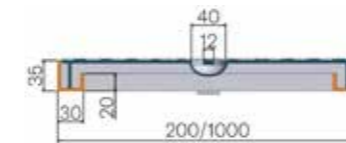


Made of hot-dip galvanised 3+2 chequered metal sheet with edging and reinforcements on 20x3 plate, inclusive of frame Th. 30/10.

Code	Size mm	Clear opening	Weight kg	Load class
5581	200x200 h30	140x140	2,61	A15
5631	250x250 h30	190x190	3,73	
5582	300x300 h30	240x240	5,02	
5632	350x350 h30	290x290	6,51	
5583	400x400 h30	340x340	8,17	
5633	450x450 h30	390x390	10,03	
5584	500x500 h30	440x440	12,06	
5634	550x550 h30	490x490	14,28	
5585	600x600 h30	540x540	16,69	
5629	650x650 h30	590x590	19,28	
5586	700x700 h30	640x640	22,05	
5587	800x800 h30	740x740	28,15	
5588	900x900 h30	840x840	34,99	
5589	1000x1000 h30	940x940	42,57	

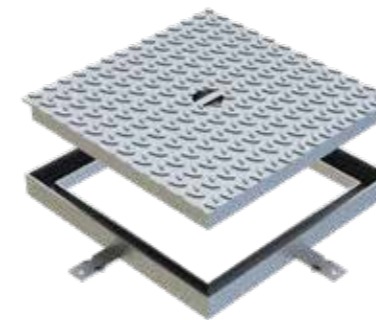
## 2.1 Basic plates and well covers

### Pedestrian areas



Drawing sizes in mm.

### Torino h35 plate

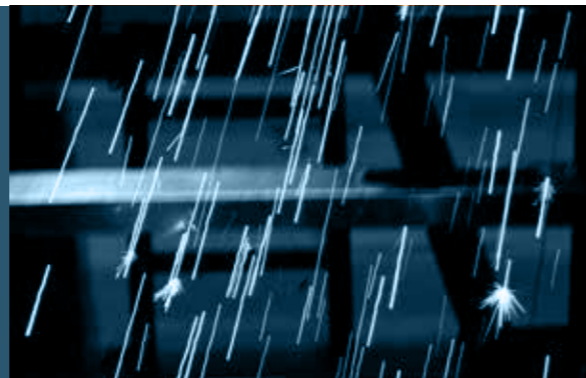


Made of hot-dip galvanised 3+2 chequered metal sheet with 25x3 plate reinforcements inclusive of 20/10 hot-dip galvanised frame and central handle for lifting.

Code	Size mm	Clear opening	Weight kg	Load class
5641	200x200 h35	140x140	2,36	A15
5642	300x300 h35	240x240	4,56	
5643	400x400 h35	340x340	7,44	
5644	500x500 h35	440x440	11,00	
5645	600x600 h35	540x540	15,24	
5646	700x700 h35	640x640	20,16	
5647	800x800 h35	740x740	25,76	
5648	900x900 h35	840x840	32,04	
5649	1000x1000 h35	940x940	39,00	

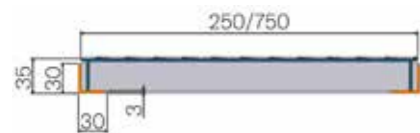
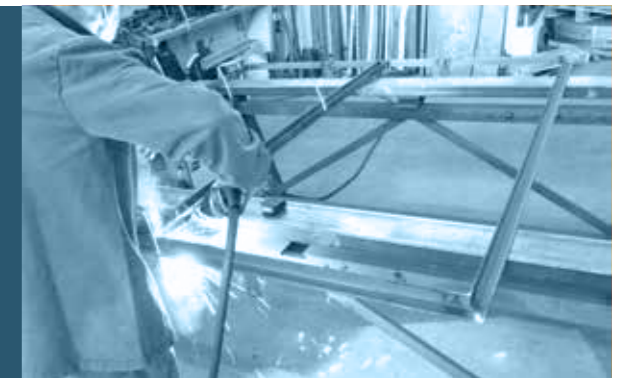
## 2.1 Basic plates and well covers

### Pedestrian areas



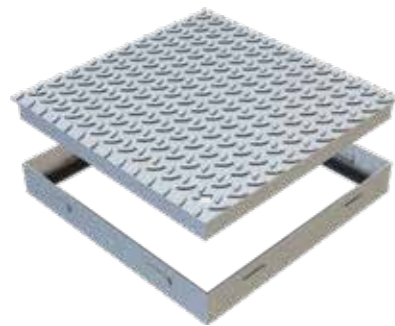
## 2.1 Basic plates and well covers

### Pedestrian areas



Drawing sizes in mm.

### Shopping h35 plate



Made of 3+2 chequered metal sheet with edging and reinforcements on 25x3 plate, hot-dip galvanised, inclusive of frame.

Code	Size mm	Clear opening	Weight kg	Load class
5390	250x250 h35	190x190	2,74	A15
5391	350x350 h35	290x290	5,34	
5392	450x450 h35	390x390	8,14	
5393	550x550 h35	490x490	11,70	
5396	550x750 h35	490x690	17,45	
5394	650x650 h35	590x590	15,88	
5395	750x750 h35	690x690	21,72	



Drawing sizes in mm.

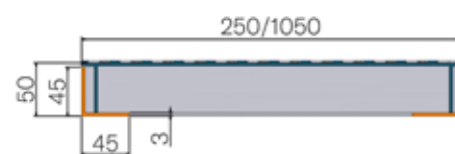
### Cisterna h35 cover



Cover made of 3+2 chequered metal sheet, hot-dip galvanised, with 35x35x3 corner frame, with hinges and handle designed for lock.

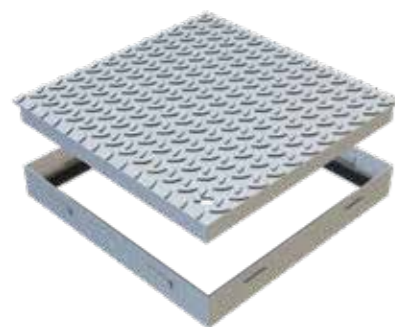
Code	Size mm	Clear opening	Weight kg	Load class
5024*	330x330 h35	260x260	5,14	A15
5025	430x430 h35	360x360	7,59	
GB23	430x630 h35	360x560	9,49	
5516	430x730 h35	360x660	11,00	
5026	530x530 h35	460x460	11,08	
5515	530x730 h35	460x660	14,33	
GB24	530x830 h35	460x760	15,66	
5027	630x630 h35	560x560	15,22	
5028	730x730 h35	660x660	20,18	
5029	830x830 h35	760x760	24,60	
5510	930x930 h35	860x860	32,72	
5512	1030x1030 h35	960x960	38,50	
5511	1130x1130 h35	1060x1060	44,00	
5513	1230x1230 h35	1160x1160	52,30	
5029R**	830x830 h35	760x760	27,40	
5510R**	930x930 h35	860x860	33,96	
5512R**	1030x1030 h35	960x960	41,78	

\* without hinges  
\*\* reinforced



Drawing sizes in mm.

### Shopping h50 plate



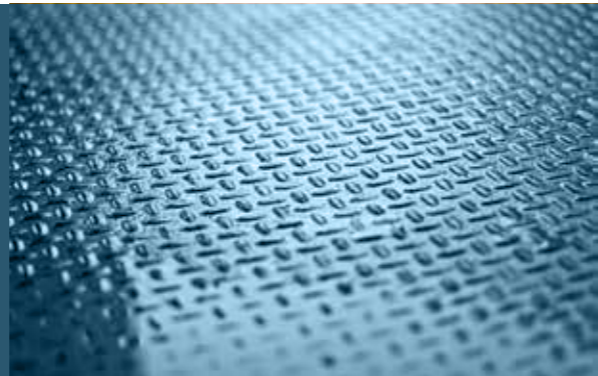
Made of 3+2 chequered metal sheet with edging and reinforcements on 50x2 plate, hot-dip galvanised, inclusive of pre-galvanised sheet metal frame Th. 15/10.

Code	Size mm	Clear opening	Weight kg	Load class
5005	250x250 h50	210x210	3,02	A15
5006	350x350 h50	310x310	5,96	
5007	450x450 h50	410x410	8,18	
5008	550x550 h50	510x510	11,78	
5442	550x750 h50	510x710	17,00	
5009	650x650 h50	610x610	15,26	
5440	750x750 h50	710x710	23,00	
5444	850x850 h50	810x810	29,00	
5448*	1050x1050 h50	1010x1010	39,74	

\* composed of a single frame and cover divided into two parts

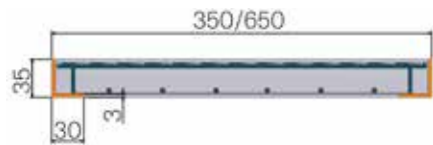
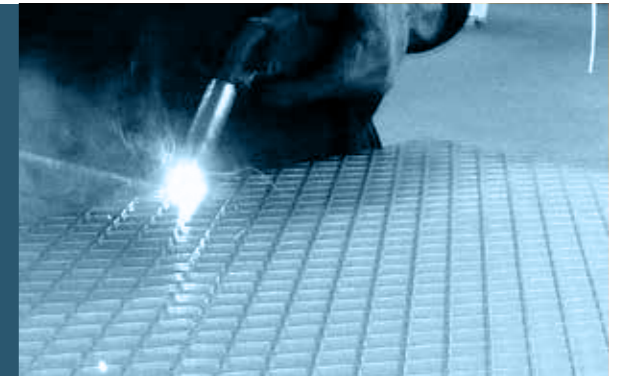
## 2.2 Professional plates

Urban areas, streets and highways



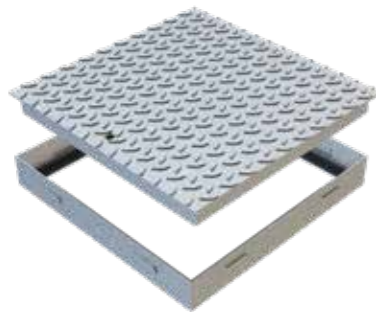
## 2.2 Professional plates

Urban areas, streets and highways



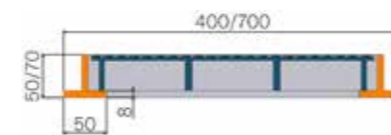
Drawing sizes in mm.

### Traffic h35 plate



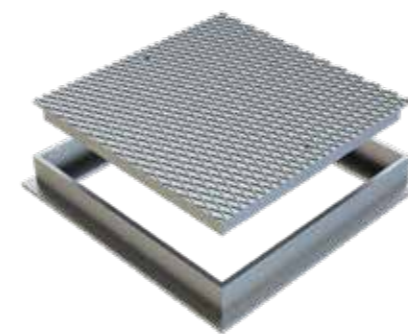
Code	Size mm	Clear opening	Weight kg	Load class
5001	350x350 h35	290x290	7,93	<b>B125</b>
5002	450x450 h35	390x390	12,95	
5003	550x550 h35	490x490	19,30	
5004	650x650 h35	590x590	27,27	

Made of 3+2 chequered metal sheet, reinforced with 25x3 - 30x50 grating, hot-dip galvanised, inclusive of frame Th. 30/10.



Drawing sizes in mm.

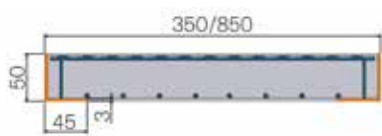
### Type E h50/60/70 plate



Code	Size mm	Clear opening	Weight kg	Load class
5431*	400x400 h50	300x300	15,92	<b>D400</b>
5601*	500x500 h60	380x380	27,00	
5602*	600x600 h60	480x480	40,00	
5603	700x700 h70	560x560	71,00	
5605*	700x1340 h60	580x1220	92,50	
5604	700x1340 h70	560x1200	127,50	
5606*	630x1580 h60	510x1460	93,60	

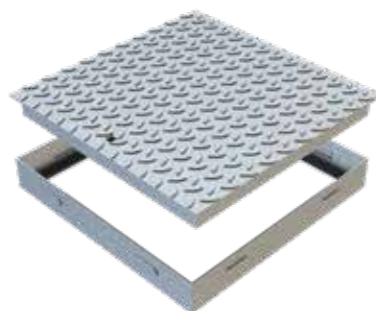
Made of 8+2 chequered metal sheet, reinforced with intersecting flat elements, hot-dip galvanised, inclusive of frame with T-shaped profile.

\* made of 4+2 chequered metal sheet



Drawing sizes in mm.

### Supertraffic h50 plate



Code	Size mm	Clear opening	Weight kg	Load class
5415	350x350 h50	250x250	10,38	<b>C250</b>
5416	450x450 h50	350x350	15,65	
5413	550x550 h50	450x450	24,00	<b>B125</b>
5412	650x650 h50	550x550	32,25	
5417	750x750 h50	650x650	41,50	
5418	850x850 h50	750x750	53,30	

Made of 3+2 chequered metal sheet, reinforced with 40x3 - 34x38 grating, hot-dip galvanised, inclusive of frame Th. 30/10.

# 3. Window wells, windows and frames



Over the years, our field experience has given us a deep understanding of customer needs: we have thus chosen to add to the Gridiron range a product that has revolutionised the sector, making the installation phase quick and efficient.

We are talking about **window wells** and **polyester frames reinforced with fibreglass**, a premium-quality material that has been used for years in the **nautical sector** and combines extreme resistance and lightness to perfection. Of course, all our window wells come with **our gratings**.

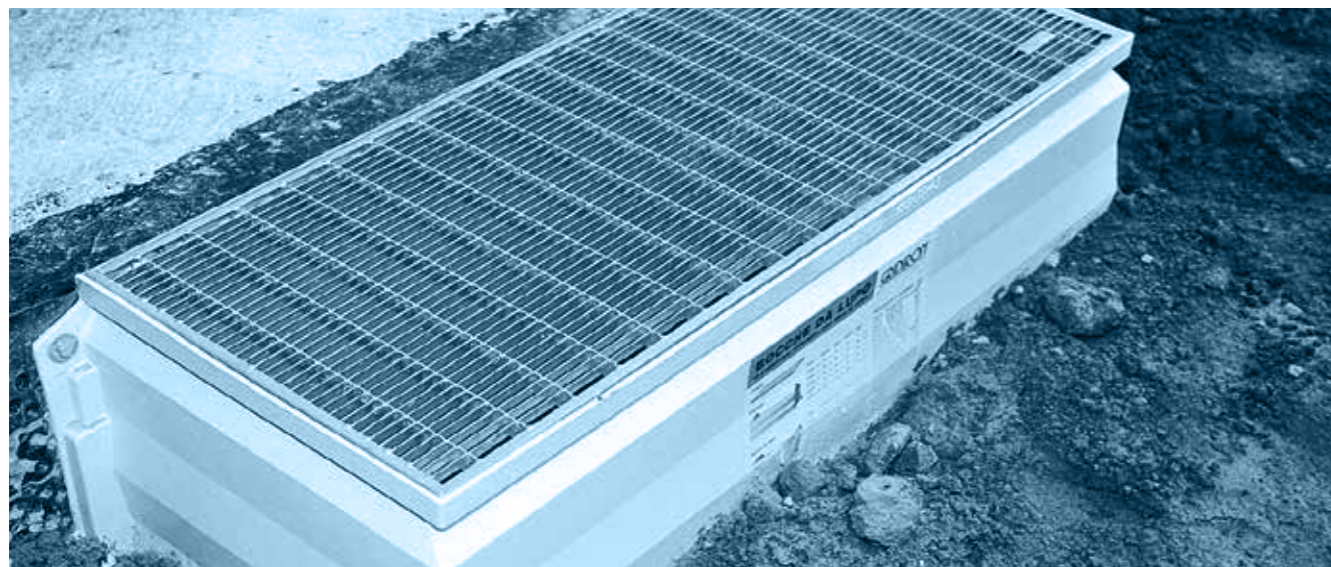
To complete the range, we offer an extensive range of models and sizes of **galvanised** and **coated steel windows**, with or without **grating**, equipped with traditional glass panels or **double glazing** and featuring various opening systems.

<b>3.1 Window wells</b>	<b>56</b>
· Reinforced polyester structure	57
· Pressure-locked grating	58
· Heelguard pressure-locked grating	58
· Accessories: adapters, filter, ventilation units	59
<b>3.2 Window</b>	<b>60</b>
· Galvanised steel, with glass panels and perforated sheet metal grating	60
· Tilt & turn or bottom-hung	61
<b>3.3 Frames</b>	<b>62</b>
<b>3.4 Doormat set</b>	<b>63</b>

# 3.1 Window wells

Gridiron **window wells** in brief:

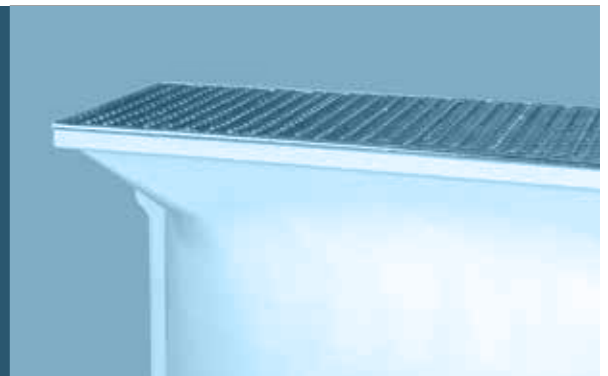
- **9 different sizes**
- A specially **contoured shape** that optimises **aeration** and **illumination**
- A **full range of accessories** for optimal installation
- Equipped with **Gridiron gratings**, edged an hot-dip galvanised, available in the **pressure-locked** version with square or **heelguard** mesh, equipped with **reinforcement plate** for improved resistance to loads, **locking system** for gratings and **discharge filter**
- **Adapter elements**, ideal for windows that are placed at a great depth with respect to the floor level



The **advantages** compared to the **traditional on-site installation**:

- **Quick** and **practical** installation, allowing the construction company to create openings for basements in a **fully autonomous** manner
- **Limited weight** and **ease of storage** on-site
- Excellent **resistance** to **impacts**, **frost** and **atmospheric agents**
- **Light colour**, for an improved **visual appeal** inside rooms
- Ease of **cleaning**

## 3.1 Window wells — Reinforced polyester structure



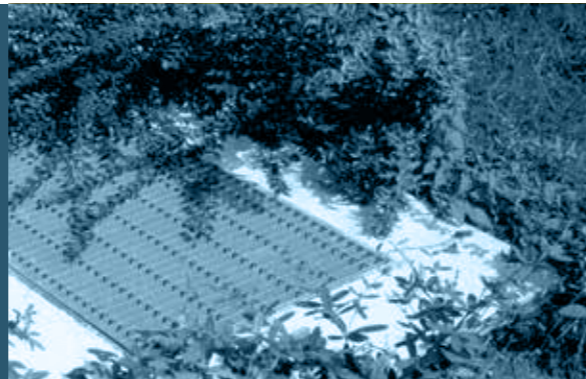
### Window wells



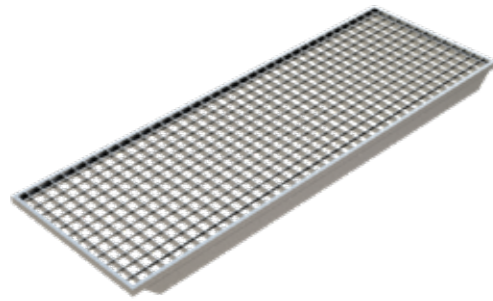
**Supplied with installation accessories.**  
The element must be installed with the grating properly positioned.

Code	Size mm	Weight kg	Hole pitch
<b>4450S</b>	800×430 h650	8,40	910
<b>4451S</b>	1000×430 h650	10,30	1090
<b>4458S</b>	1000×430 h800	12,70	1090
<b>4452S</b>	1000×430 h1000	12,00	1090
<b>4453S</b>	1000×600 h1000	19,96	1090
<b>4454S</b>	1000×430 h1300	15,74	1090
<b>4455S</b>	1250×430 h1000	14,08	1340
<b>4459S</b>	1250×600 h1000	19,00	1340
<b>4464S</b>	1250×600 h1300	21,00	1340
<b>4456S</b>	1500×600 h1200	27,28	1570
<b>4457S</b>	2000×600 h1200	29,32	2215

## 3.1 Window wells — Pressure-locked gratings



### Window wells Pressure-locked gratings



Pressure-locked grating type 20x2 - 10x2 33x33, with reinforcement plate, hot-dip galvanised

Code	Size mm	Weight kg	Load class
4450GP	430x800	6,08	A15
4451GP	430x1000	7,34	
4453GP	600x1000	9,90	
4455GP	430x1250	9,30	
4459GP	600x1250	12,00	
4456GP	600x1500	14,54	
4457GP	600x2000	23,56	

### Window wells Pressure-locked heelguard gratings



Pressure-locked grating type 20x2 - 10x2 55x11 (heelguard), with reinforcement plate, hot-dip galvanised.

Code	Size mm	Weight kg	Load class
4450GPA	430x800	7,32	A15
4451GPA	430x1000	9,00	
4453GPA	600x1000	12,82	
4455GPA	430x1250	11,10	
4459GPA	600x1250	15,00	
4456GPA	600x1500	18,02	
4457GPA	600x2000	28,36	

## 3.1 Window wells — Accessories



### Window wells Adapters



Made of fibreglass-reinforced polyester. Supplied with installation accessories. The adapter's height can be adjusted from 70 to 350 mm, by sliding the element along the outside of the window well.

Code	Size mm	Weight kg	Hole pitch
4450SS	800x430 h350	5,94	910
4452SS	1000x430 h350	5,68	1090
4453SS	1000x600 h350	7,66	1090
4455SS	1250x430 h350	7,30	1340
4459SS	1250x600 h350	9,00	1340
4456SS	1500x600 h350	8,82	1570
4457SS	2000x600 h350	12,00	2115

### Window wells Filter outlet



The outlet functioning as a filter is composed of 3 elements assembled on top of one another to form a single body.

Code	Description	Weight kg
4450SC	Lower outlet Ø 70 mm and trap	0,12

### Window wells Ventilation units



Code	Type	Size mm	Grating type
4460S	aerator	200x365 h400	-
4460GP	grating	200x365	20x2 - 10x2 33x33
4460GPA	grating	200x365	20x2 - 10x2 55x11*

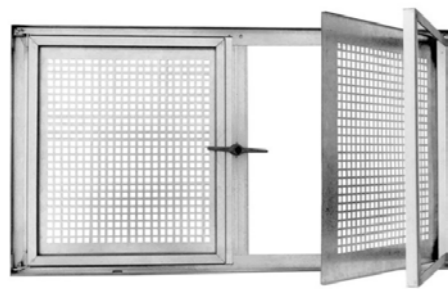
\*heelguard

Made of fibreglass-reinforced polyester. Stackable and inclusive of fixing dowels. Easy and quick to install, they allow for creating and completing directly on-site ventilation conduits or units housing utility connections and wiring.

## 3.2 Windows — Galvanised steel windows with glass panels and perforated sheet metal grating



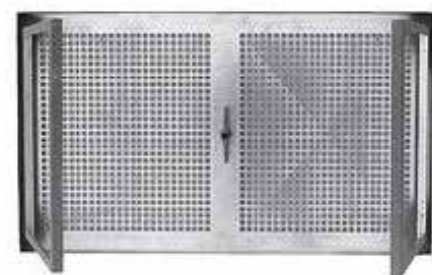
### Elite 44N window



Openable galvanised steel window with glass panels and perforated sheet metal grating, galvanised or coated.

Code	Finish	Window size mm	Frame size mm
44N1Z	galvanised	645×395	750×500
44N2Z	galvanised	645×520	750×625
44N3Z	galvanised	645×645	750×750
44N4Z	galvanised	895×395	1000×500
44N5Z	galvanised	895×520	1000×625
44N6Z	galvanised	895×645	1000×750
44N7Z	galvanised	895×895	1000×1000
44N1V	coated	645×395	750×500
44N2V	coated	645×520	750×625
44N3V	coated	645×645	750×750
44N4V	coated	895×395	1000×500
44N5V	coated	895×520	1000×625
44N6V	coated	895×645	1000×750
44N7V	coated	895×895	1000×1000

### Elite 44P window



Fixed galvanised steel window with glass panels and perforated sheet metal grating, galvanised or coated.

Code	Finish	Window size mm	Frame size mm
44P1Z	galvanised	645×395	750×500
44P2Z	galvanised	645×520	750×625
44P3Z	galvanised	645×645	750×750
44P4Z	galvanised	895×395	1000×500
44P5Z	galvanised	895×520	1000×625
44P6Z	galvanised	895×645	1000×750
44P7Z	galvanised	895×895	1000×1000
44P1V	coated	645×395	750×500
44P2V	coated	645×520	750×625
44P3V	coated	645×645	750×750
44P4V	coated	895×395	1000×500
44P5V	coated	895×520	1000×625
44P6V	coated	895×645	1000×750
44P7V	coated	895×895	1000×1000

## 3.2 Windows — Tilt & turn or bottom-hung

### Elite 44Q window



Bottom-hung window with normal glass, double glazing or mouse-proof grating.

Code	Finish	Window size mm	Frame size mm
44Q1A	normal glass	645×395	750×500
44Q2A	normal glass	645×520	750×625
44Q3A	normal glass	645×645	750×750
44Q4A	normal glass	895×395	1000×500
44Q5A	normal glass	895×520	1000×625
44Q6A	normal glass	895×645	1000×750
44Q7A	normal glass	895×895	1000×1000
44Q1B	double glazing	645×395	750×500
44Q2B	double glazing	645×520	750×625
44Q3B	double glazing	645×645	750×750
44Q4B	double glazing	895×395	1000×500
44Q5B	double glazing	895×520	1000×625
44Q6B	double glazing	895×645	1000×750
44Q7B	double glazing	895×895	1000×1000
44Q1G	mouse-proof grating	645×395	750×500
44Q2G	mouse-proof grating	645×520	750×625
44Q3G	mouse-proof grating	645×645	750×750
44Q4G	mouse-proof grating	895×395	1000×500
44Q5G	mouse-proof grating	895×520	1000×625
44Q6G	mouse-proof grating	895×645	1000×750
44Q7G	mouse-proof grating	895×895	1000×1000

### Elite 44R window



Tilt & turn window with double glazing.

Code	Finish	Window size mm	Frame size mm
44R1B	double glazing	645×395	750×500
44R2B	double glazing	645×520	750×625
44R3B	double glazing	645×645	750×750
44R4B	double glazing	895×395	1000×500
44R5B	double glazing	895×520	1000×625
44R6B	double glazing	895×645	1000×750
44R7B	double glazing	895×895	1000×1000



### 3.3 Frames

— Reinforced polyester



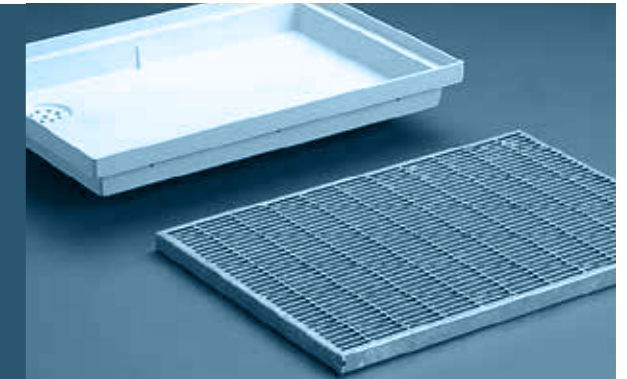
## Fibreglass-reinforced polyester windows



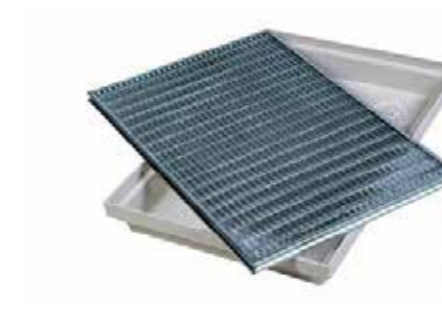
Window frame made of fibreglass-reinforced polyester.

Code	Size mm	Wall width
44G124	750×500	250
44G130	750×500	300
44G136	750×500	365
44G224	750×625	250
44G230	750×625	300
44G236	750×625	365
44G324	750×750	250
44G330	750×750	300
44G336	750×750	365
44G424	1000×500	250
44G430	1000×500	300
44G436	1000×500	365
44G524	1000×625	250
44G530	1000×625	300
44G536	1000×625	365
44G624	1000×750	250
44G630	1000×750	300
44G636	1000×750	365
44G724	1000×1000	250
44G730	1000×1000	300
44G736	1000×1000	365

### 3.4 Doormat set



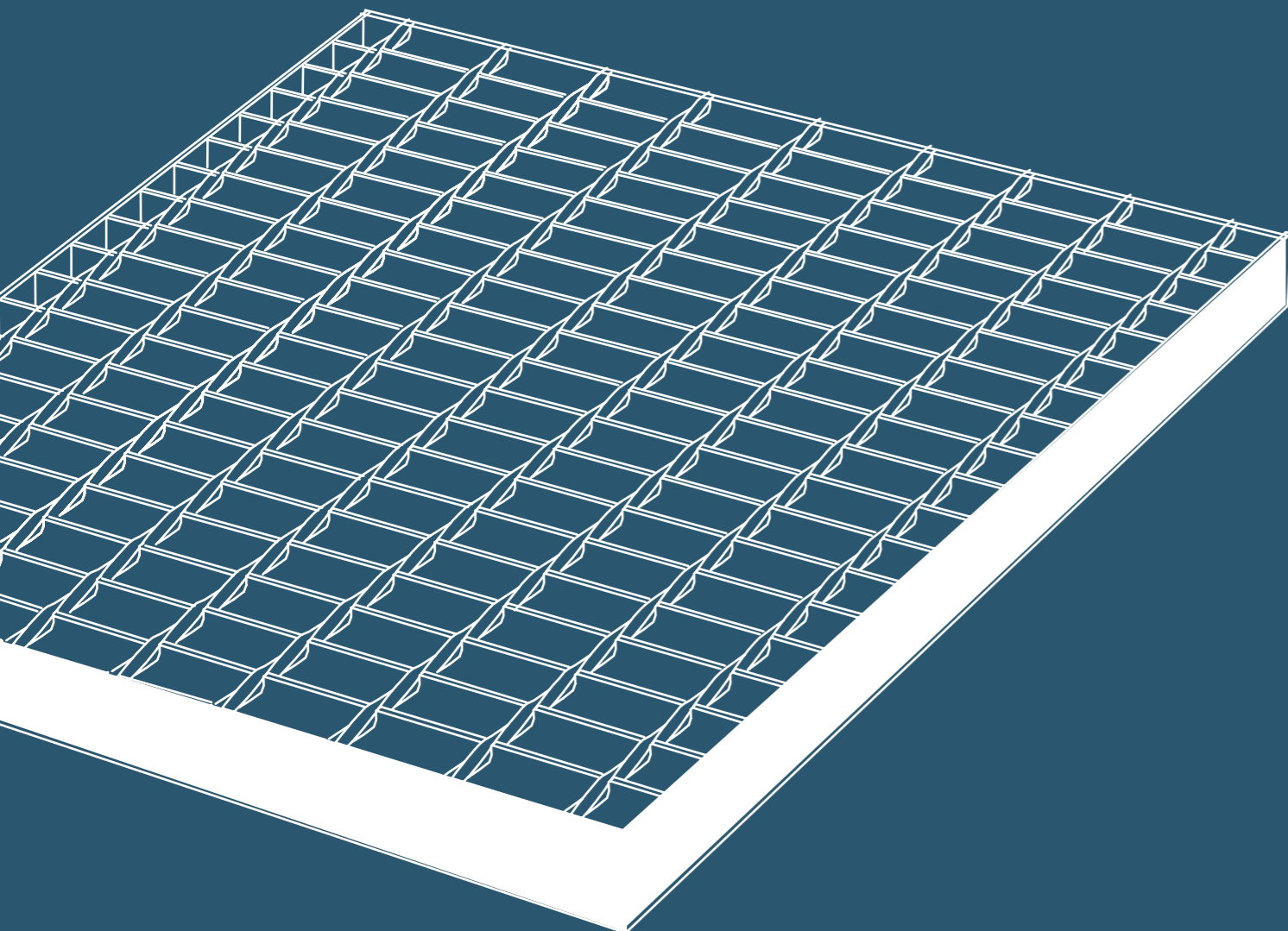
## Window wells Doormat set



Includes, besides the edged and galvanised grating mat type 20×2-55×11 (heelguard), the container equipped with water drain. The ideal solution for a **flush** finish that makes cleaning easy and quick by simply lifting the grating.

Code	Size mm
4461SG	600×400 h75
4462SG	800×500 h75

# 4. Standard gratings



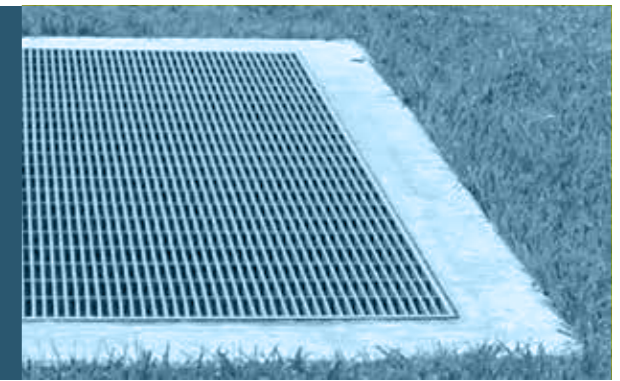
**Gridiron** is renowned worldwide as a **premium brand** in the production of **gratings**, thanks to the **superior quality** of the raw materials and processing. The current range includes a wide variety of **standard** and **gully gratings**, which are perfect for any need in terms of size and load-bearing capacity, and gratings **complete with frame** for making **window wells** on-site, both **light-well** and **wall-mounted**.

<b>4.1 Standard gratings</b>	<b>66</b>
· Forge-welded grating: walk-over and drive-over load-bearing capacity	67
· Pressure-locked and heelguard grating: for pedestrian and urban areas	72
· Gully gratings	74
<b>4.2 Gratings for window wells</b>	<b>75</b>

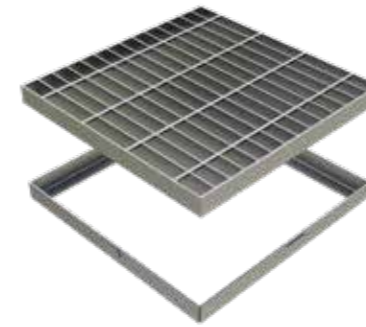


## 4.1 Standard gratings

– Forge-welded grating:  
walk-over and drive-over  
load-bearing capacity



### Standard grating **Forge-welded grating** **25x2 - 25x76**



Made with a forge-welded and hot-dip galvanised grating, they are supplied together with the frame. The wide range of available sizes ensures application versatility, including the creation of drive-over passageways. The frame has an L-shaped profile size 30x20x2 mm.

Code	Size mm	Clear opening	Grating type	Weight kg	Load class
5039N	445x445 h30	405x405	25x2 - 25x76	5,85	A15
5040N	548x548 h30	508x508	25x2 - 25x76	7,90	
5068N	430x522 h30	390x482	25x2 - 25x76	6,56	
5041N	650x650 h30	610x610	25x2 - 25x76	11,52	
5070N	752x752 h30	712x712	25x2 - 25x76	15,28	
5045N	430x803 h30	390x763	25x2 - 25x76	9,91	
5059N	550x803 h30	550x763	25x2 - 25x76	11,48	
5046N	430x1007 h30	390x967	25x2 - 25x76	12,79	
5055N	550x1007 h30	510x967	25x2 - 25x76	15,97	
5056N	630x1007 h30	590x967	25x2 - 25x76	16,95	
5057N	710x1007 h30	670x967	25x2 - 25x76	18,70	
5064N	820x1007 h30	780x967	25x2 - 25x76	21,58	
5080N	170x522 h30	130x482	25x2 - 25x76	3,28	B125
5047N	293x293 h30	253x253	25x2 - 25x76	2,72	
5038N	344x344 h30	304x304	25x2 - 25x76	3,49	
5081N	240x522 h30	200x482	25x2 - 25x76	4,23	
5042N	280x522 h30	240x482	25x2 - 25x76	4,61	
5082N	320x522 h30	280x482	25x2 - 25x76	5,20	
5084N	240x803 h30	200x763	25x2 - 25x76	6,25	
5043N	280x803 h30	240x763	25x2 - 25x76	6,90	
5085N	320x803 h30	280x763	25x2 - 25x76	8,10	
5077N	240x1007 h30	200x967	25x2 - 25x76	8,00	
5044N	280x1007 h30	240x967	25x2 - 25x76	8,28	C250
5069N	320x1007 h30	280x967	25x2 - 25x76	10,00	
5037N	242x242 h30	202x202	25x2 - 25x76	2,08	
5083N	170x803 h30	130x763	25x2 - 25x76	4,76	
5079N	170x1007 h30	130x967	25x2 - 25x76	6,05	

## 4.1 Standard gratings

– Forge-welded grating: walk-over and drive-over load-bearing capacity

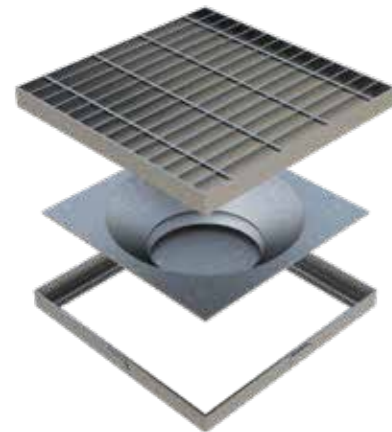


## 4.1 Standard gratings

– Forge-welded grating: walk-over and drive-over load-bearing capacity



### Standard gratings **Siphoned**



Code	Size mm	Clear opening	Grating type	Weight kg	Load class
5038S	320×320 h30	280×280	25×2 - 22×76	3,72	A15
5039S	420×420 h30	380×380	25×2 - 22×76	6,17	

A **trap** made of special plastic material resistant to aggressive agents that prevents **bad odour** back-flow during **liquid** disposal. The functionality of this accessory allows for using the grating both **indoors** and **outdoors** with the same effectiveness.

The complete supply includes the grating and frame, both hot-dip galvanised, and the trap. It is available in two different sizes with a square shape.

### **PVC trap only**



Available in two square sizes.

Code	Size mm
5038P	320×320
5039P	420×420

### Standard gratings **Forge-welded grating**

#### **40×3 - 25×76 Drive-over**



The specific and growing demand for drive-over gratings has led us to offer a dedicated range for satisfying this demand. All the gratings, made of steel, are supplied with the relevant frame and are entirely hot-dip galvanised. Their extensive load-bearing capacity is guaranteed by 40×3 bars at merely 22 mm each. The frame has an L-shaped profile measuring 43×20×2 mm.

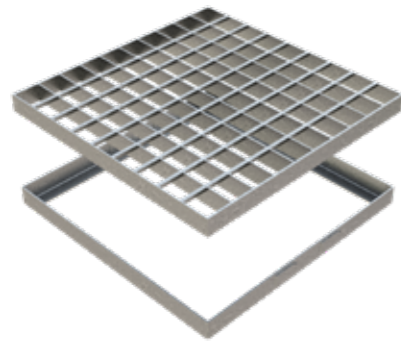
Code	Size mm	Clear opening	Grating type	Weight kg	Load class
5096	500×600 h45	455×555	40×3 - 25×76	17,8	B125
5078	600×1000 h45	555×955	40×3 - 25×76	30,7	
5095	500×500 h45	455×455	40×3 - 25×76	14,7	
5076	500×1000 h45	455×955	40×3 - 25×76	27,4	C250
5093	350×500 h45	305×455	40×3 - 25×76	10,2	
5094	400×500 h45	355×455	40×3 - 25×76	11,6	
5074	350×1000 h45	305×955	40×3 - 25×76	19,8	D400
5075	400×1000 h45	355×955	40×3 - 25×76	21,7	
5090	200×500 h45	155×455	40×3 - 25×76	6,6	
5091	250×500 h45	205×455	40×3 - 25×76	7,7	D400
5092	300×500 h45	255×455	40×3 - 25×76	9,8	
5071	200×1000 h45	155×955	40×3 - 25×76	12,8	
5072	250×1000 h45	205×955	40×3 - 25×76	15,5	
5073	300×1000 h45	255×955	40×3 - 25×76	18,0	

## 4.1 Standard gratings

– Forge-welded grating: walk-over and drive-over load-bearing capacity



### Standard grating **Walky forge-welded grating 25x2 - 34x38**

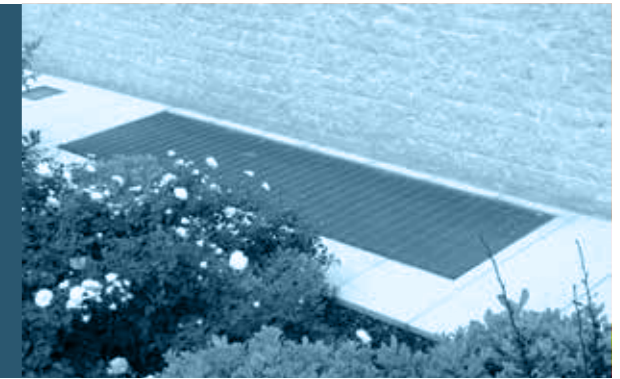


Hot-dip galvanised, inclusive of frame with L-shaped profile size 30x20x2 mm.

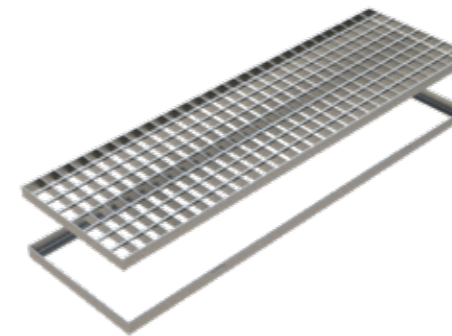
Code	Size mm	Clear opening	Grating type	Weight kg	Load class
<b>5252</b>	350x350 h30	310x310	25x2 - 34x38	3,37	<b>A15</b>
<b>5253</b>	450x450 h30	410x410	25x2 - 34x38	5,11	
<b>5254</b>	550x550 h30	510x510	25x2 - 34x38	7,15	
<b>5255</b>	650x650 h30	610x610	25x2 - 34x38	9,58	
<b>5264</b>	300x500 h30	260x460	25x2 - 34x38	4,34	
<b>5259</b>	300x1000 h30	260x960	25x2 - 34x38	8,79	
<b>5260</b>	400x1000 h30	360x960	25x2 - 34x38	9,56	
<b>5261</b>	500x1000 h30	460x960	25x2 - 34x38	11,44	
<b>5251</b>	250x250 h30	210x210	25x2 - 34x38	1,97	
<b>5266</b>	100x500 h30	60x460	25x2 - 34x38	2,11	
<b>5267</b>	100x1000 h30	60x960	25x2 - 34x38	4,01	
<b>5265</b>	150x500 h30	110x460	25x2 - 34x38	5,08	
<b>5256</b>	150x1000 h30	110x960	25x2 - 34x38	3,38	
<b>5262</b>	200x500 h30	160x460	25x2 - 34x38	5,94	
<b>5257</b>	200x1000 h30	160x960	25x2 - 34x38	3,82	
<b>5263</b>	250x500 h30	210x460	25x2 - 34x38	3,82	
<b>5258</b>	250x1000 h30	210x960	25x2 - 34x38	6,78	

## 4.1 Standard gratings

– Forge-welded grating: walk-over and drive-over load-bearing capacity



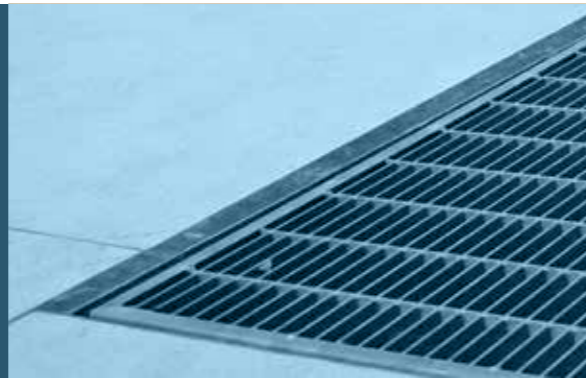
### Standard grating **Walky forge-welded grating 40x3 - 34x38 Drive-over**



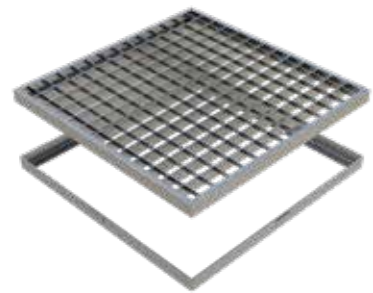
Hot-dip galvanised, inclusive of frame with L-shaped profile size 43x20x2 mm.

Code	Size mm	Clear opening	Grating type	Weight kg	Load class
<b>5271</b>	150x1000 h45	105x955	40x3 - 34x38	8,40	<b>D400</b>
<b>5272</b>	200x1000 h45	155x955	40x3 - 34x38	10,38	
<b>5273</b>	250x1000 h45	205x955	40x3 - 34x38	11,72	
<b>5274</b>	300x1000 h45	265x955	40x3 - 34x38	13,90	<b>C250</b>

## 4.1 Standard gratings — pressure-locked and heel-guard mesh: for pedestrian and urban areas



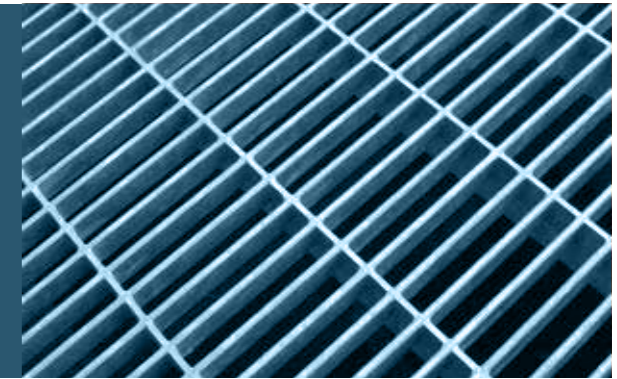
### Standard grating Pressure-locked grating 25x2 - 33x33



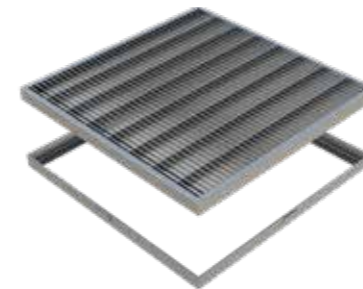
Hot-dip galvanised, inclusive of frame with L-shaped profile size 30x20x2 mm

Code	Size mm	Clear opening	Grating type	Weight kg	Load class
5342	300x300 h30	260x260	25x2 - 33x33	2,55	A15
5302	350x350 h30	310x310	25x2 - 33x33	3,50	
5343	400x400 h30	360x360	25x2 - 33x33	4,04	
5303	450x450 h30	410x410	25x2 - 33x33	5,23	
5344	500x500 h30	460x460	25x2 - 33x33	5,83	
5304	550x550 h30	510x510	25x2 - 33x33	7,28	
5345	600x600 h30	560x560	25x2 - 33x33	7,98	
5305	650x650 h30	610x610	25x2 - 33x33	9,89	
5309	300x1000 h30	260x960	25x2 - 33x33	7,58	
5347	400x1000 h30	360x960	25x2 - 33x33	9,55	
5348	500x1000 h30	460x960	25x2 - 33x33	11,47	
5349	600x1000 h30	560x960	25x2 - 33x33	13,76	
5341	200x200 h30	160x160	25x2 - 33x33	1,36	B125
5301	250x250 h30	210x210	25x2 - 33x33	1,98	
5306	150x1000 h30	110x960	25x2 - 33x33	4,81	
5307	210x1000 h30	170x960	25x2 - 33x33	5,52	
5308	250x1000 h30	210x960	25x2 - 33x33	6,54	

## 4.1 Standard gratings — pressure-locked and heel-guard mesh: for pedestrian and urban areas



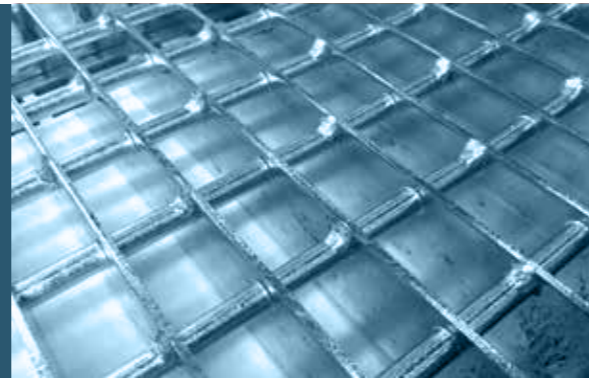
### Standard grating Heelguard pressure-locked grating 25x2 - 55x11



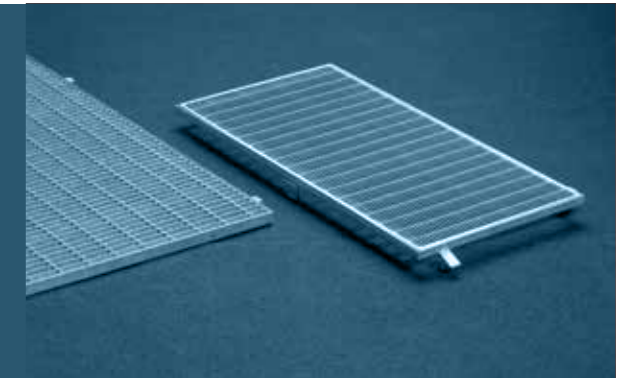
Hot-dip galvanised, inclusive of frame with L-shaped profile size 30x20x2 mm.

Code	Size mm	Clear opening	Grating type	Weight kg	Load class
5311	250x250 h30	210x210	25x2 - 55x11	2,28	A15
5372	300x300 h30	260x260	25x2 - 55x11	2,94	
5312	350x350 h30	310x310	25x2 - 55x11	4,01	
5373	400x400 h30	360x360	25x2 - 55x11	4,73	
5313	450x450 h30	410x410	25x2 - 55x11	5,99	
5374	500x500 h30	460x460	25x2 - 55x11	7,03	
5314	550x550 h30	510x510	25x2 - 55x11	8,51	
5375	600x600 h30	560x560	25x2 - 55x11	9,87	
5315	650x650 h30	610x610	25x2 - 55x11	11,59	
4801	250x1000 h30	210x960	25x2 - 55x11	7,79	
4901	300x1000 h30	260x960	25x2 - 55x11	8,87	
5101	400x1000 h30	360x960	25x2 - 55x11	12,10	
5102	500x1000 h30	460x960	25x2 - 55x11	16,52	
5103	600x1000 h30	560x960	25x2 - 55x11	17,82	
5371	200x200 h30	160x160	25x2 - 55x11	1,45	B125
4601	150x1000 h30	110x960	25x2 - 55x11	5,10	
4701	210x1000 h30	170x960	25x2 - 55x11	6,01	

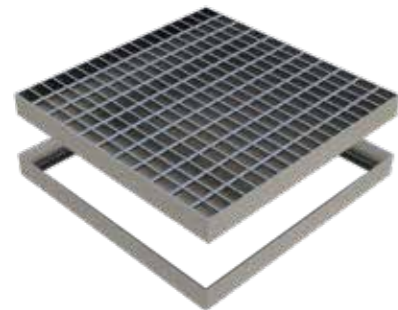
## 4.1 Standard gratings — Gully gratings



## 4.2 Gratings for window wells — Pull-out or fixed, pressure-locked or forge-welded



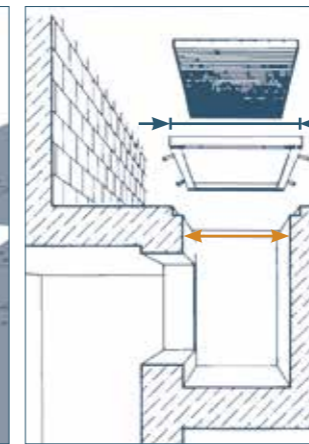
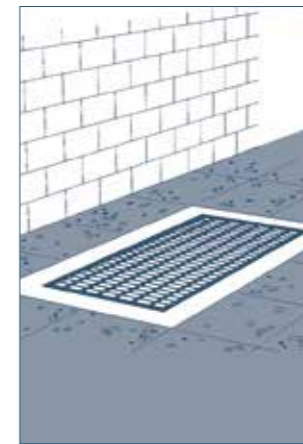
### Standard grating **Strong gully gratings**



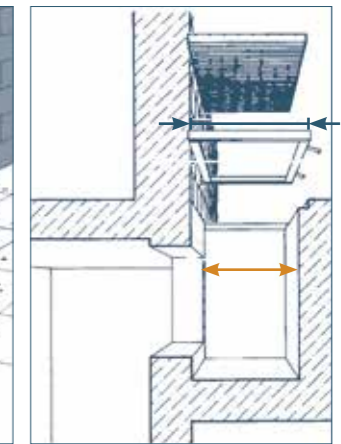
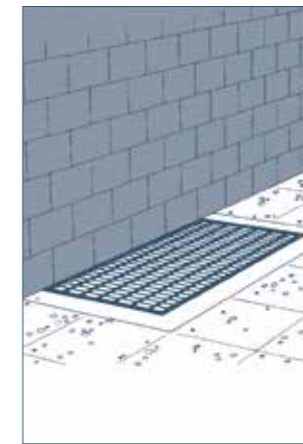
Code	Size mm	Clear opening	Grating type	Weight kg	Load class
5033	360×360 h55	310×310	50×4 - 30×50	9,64	C250
5034	460×460 h55	410×410	50×4 - 30×50	14,85	
5035	560×560 h55	510×510	50×4 - 30×50	21,52	
5036	660×660 h55	610×610	50×4 - 30×50	28,24	

Designed for withstanding **extreme stresses**: the plates with a 50×4 mm thickness, suitably drilled, are criss-crossed by iron rods with a 10 mm diameter, to create a 30×50 mm hot-dip galvanised grating. Each gully grating is supplied with the relevant hot-dip galvanised frame with 3 mm thickness.

#### Light-well

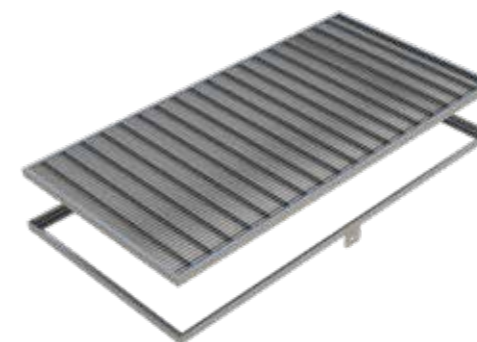


#### Wall-mounted



The dimensions to be considered for manufacturing the gratings are the **internal width** and **length** of the **window wells** or, alternatively, the size of **the finished frame**, as indicated by the blue arrows. The instructions about the **load-bearing capacity** are essential for choosing the proper grating. The supplied frame is equipped with brackets for securing it firmly to the window well.

### Standard grating **Heelguard pressure-locked grating 20×2 - 55×11 Pull-out**



Code	Size mm	Clear opening	Grating type	Weight kg	Load class
5321	530×1050 h25	500×1000	20×2 - 55×11	15,10	A15
5324	630×1060 h25	600×1010	20×2 - 55×11	16,90	
5365	630×1210 h25	600×1160	20×2 - 55×11	19,30	
5322	630×1260 h25	600×1210	20×2 - 55×11	20,17	
5327	630×1320 h25	600×1270	20×2 - 55×11	21,00	
5328	630×1360 h25	600×1310	20×2 - 55×11	21,60	
5323	630×1560 h25	600×1510	20×2 - 55×11	24,70	
5325	630×1760 h25	600×1710	20×2 - 55×11	27,50	
5367	630×1810 h25	600×1760	20×2 - 55×11	29,00	
5329	630×2060 h25	600×2010	20×2 - 55×11	32,80	
5326	630×2260 h25	600×2210	20×2 - 55×11	36,80	
5366	630×2560 h25	600×2510	20×2 - 55×11	41,70	

Hot-dip galvanised, inclusive of wall-mounted frame with corner profile size 25×25×3 mm. The BLINDO anti-theft system for securing the grating can be supplied on request.

## 4.2 Gratings for window wells — Pull-out or fixed, pressure-locked or forge-welded



### Standard grating Heelguard forge-welded grating 25×2 - 22×76 Pull-out



Hot-dip galvanised, inclusive of wall-mounted frame with corner profile size 30×30×3 mm. The BLINDO anti-theft system for securing the grating can be supplied on request.

Code	Size mm	Clear opening	Grating type	Weight kg	Load class
5201	530×1050 h30	500×990	25×2 - 22×76	18,60	A15
5204	630×1060 h30	600×1000	25×2 - 22×76	21,80	
5207	630×1210 h30	600×1150	25×2 - 22×76	24,70	
5202	630×1260 h30	600×1200	25×2 - 22×76	25,60	
5210	630×1320 h30	600×1260	25×2 - 22×76	26,70	
5208	630×1360 h30	600×1300	25×2 - 22×76	27,50	
5203	630×1560 h30	600×1500	25×2 - 22×76	31,30	
5205	630×1760 h30	600×1700	25×2 - 22×76	35,10	
5212	630×1810 h30	600×1750	25×2 - 22×76	36,10	
5209	630×2070 h30	600×2010	25×2 - 22×76	40,90	
5206	630×2260 h30	600×2200	25×2 - 22×76	44,50	
5211	630×2560 h30	600×2500	25×2 - 22×76	50,10	

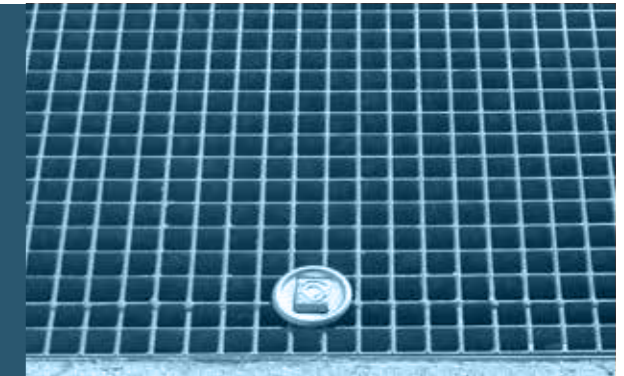
### Standard grating Heelguard pressure-locked grating 25×2 - 55×11 Fixed



With edge profile size 30×30×3 mm.

Code	Size mm	Clear opening	Grating type	Weight kg	Load class
5215 FM	530×1050 h30	500×990	25×2 - 55×11	15,50	A15
5216 FM	630×1060 h30	600×1000	25×2 - 55×11	20,50	
5217 FM	630×1210 h30	600×1150	25×2 - 55×11	23,10	
5218 FM	630×1260 h30	600×1200	25×2 - 55×11	24,00	
5219 FM	630×1320 h30	600×1260	25×2 - 55×11	25,10	
5220 FM	630×1360 h30	600×1300	25×2 - 55×11	25,80	
5221 FM	630×1560 h30	600×1500	25×2 - 55×11	29,70	
5222 FM	630×1760 h30	600×1700	25×2 - 55×11	33,60	
5223 FM	630×1810 h30	600×1750	25×2 - 55×11	34,50	
5227 FM	630×1830 h30	600×1170	25×2 - 55×11	39,30	
5224 FM	630×2060 h30	600×2000	25×2 - 55×11	39,30	
5225 FM	630×2260 h30	600×2200	25×2 - 55×11	43,10	
5226 FM	630×2560 h30	600×2500	25×2 - 55×11	48,90	

## 4.2 Gratings for window wells — Pull-out or fixed, pressure-locked or forge-welded



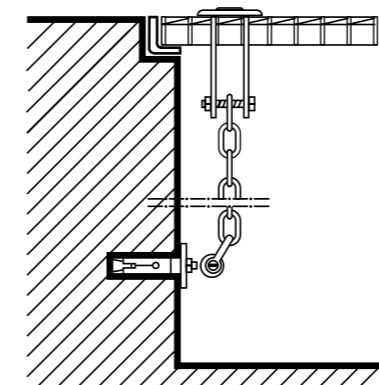
### Standard grating Forge-welded grating 25×2 - 22×76 Fixed



With flat edge size 25×5 mm.

Code	Size mm	Clear opening	Grating type	Weight kg	Load class
5201 FM	530×1050 h30	500×990	25×2 - 22×76	17,90	A15
5204 FM	630×1060 h30	600×1000	25×2 - 22×76	20,90	
5207 FM	630×1210 h30	600×1150	25×2 - 22×76	23,60	
5202 FM	630×1260 h30	600×1200	25×2 - 22×76	24,60	
5210 FM	630×1320 h30	600×1260	25×2 - 22×76	25,70	
5208 FM	630×1360 h30	600×1300	25×2 - 22×76	26,40	
5203 FM	630×1560 h30	600×1500	25×2 - 22×76	30,00	
5205 FM	630×1760 h30	600×1700	25×2 - 22×76	33,60	
5212 FM	630×1810 h30	600×1750	25×2 - 22×76	34,50	
5209 FM	630×2060 h30	600×2000	25×2 - 22×76	39,00	
5206 FM	630×2260 h30	600×2200	25×2 - 22×76	42,60	
5211 FM	630×2560 h30	600×2500	25×2 - 22×76	48,00	

## Blindo anti-theft system for gratings



For grating up to H70 mm.

Code	Size mm
1000	Pack containing a complete anti-theft set

It is an accessory that can be supplied on request, applicable to **any type of grating**, for preventing access to the underlying opening and protecting the grating against theft.

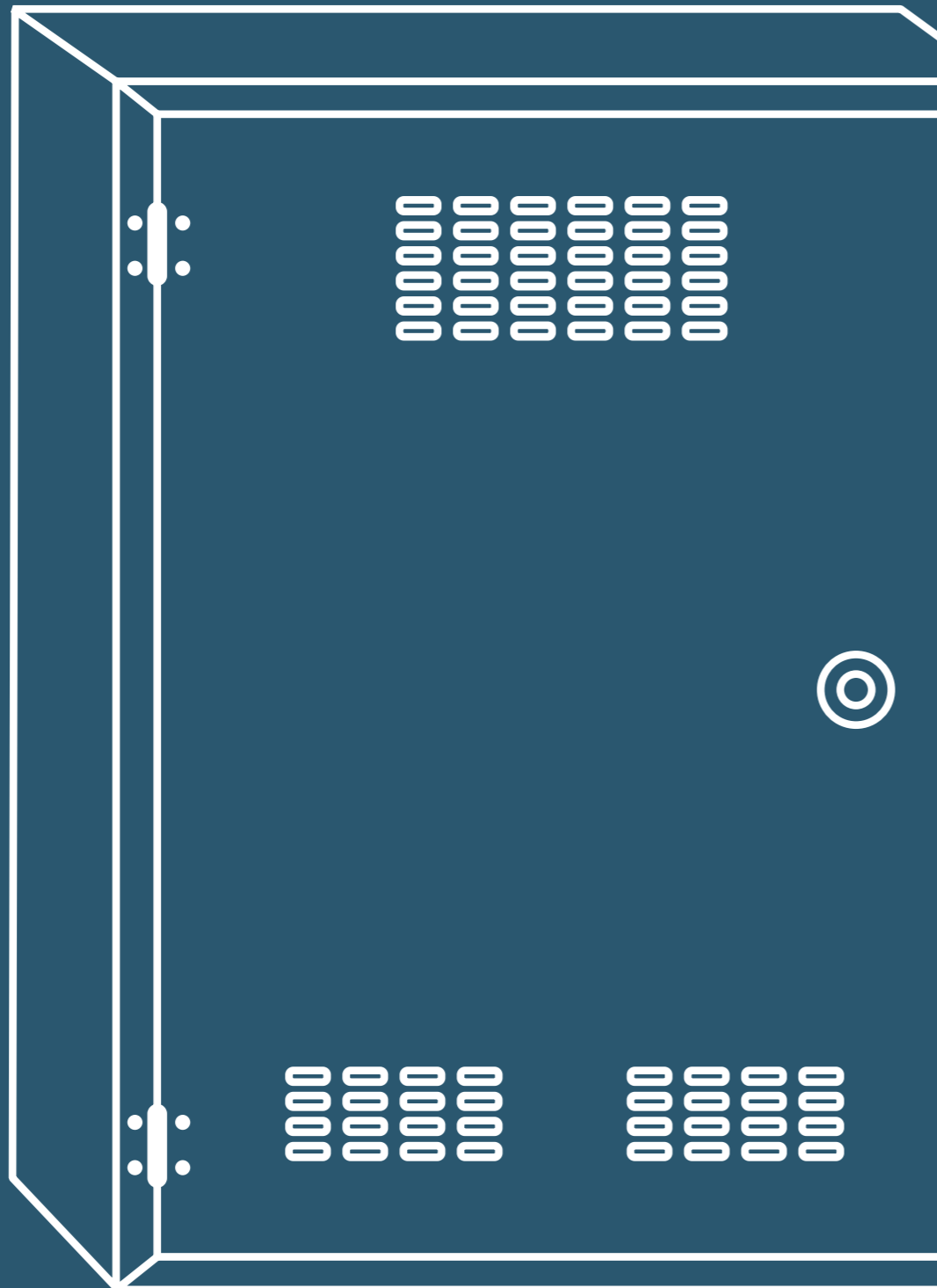
With specific regard to window wells, at least 2 anti-theft devices for the grating should be mounted.

One pack contains the set for 1 anti-theft anchor inclusive of correct mounting instructions.

The components subject to the greatest wear are made of AISI 304 stainless steel.



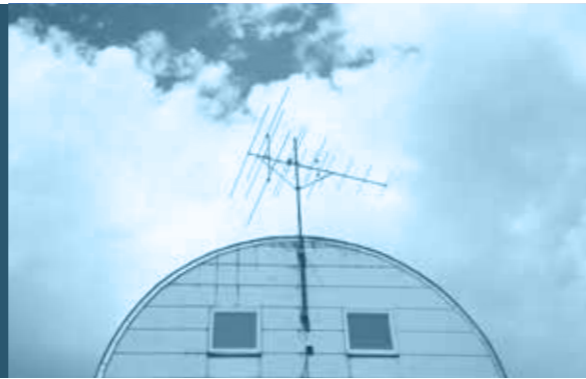
# 5. Galvanised and stainless steel accessories



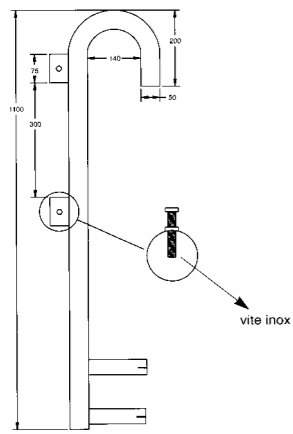
The Gridiron range is completed by a series of indispensable accessories, made only with the **finest materials** available on the market.

<b>5. Galvanised and stainless steel accessories</b>	<b>78</b>
· Satellite dish pole	80
· Antenna holder	80
· Safety posts	81
· Cabinets and doors for water and gas meters, insulated and non-insulated	82
· Posts, rods and eye bolts for meshes	86

## 5. Satellite dish pole and antenna holder

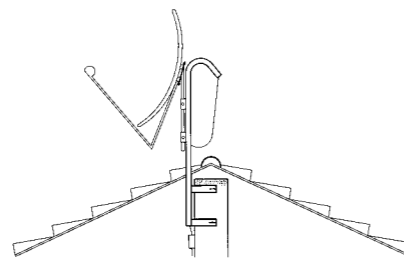


### Satellite dish pole made of galvanised Ø 50 mm tube



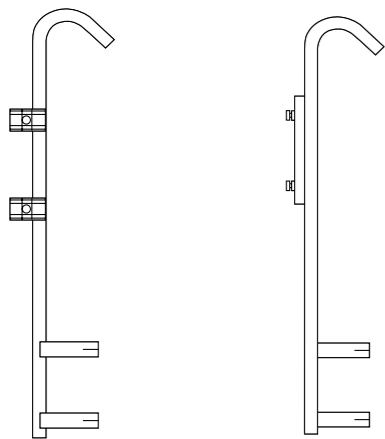
Satellite dish pole.

Code	Tube diameter mm	Length mm
5731	50	1100
5733	50	1500
5732	50	1800



Satellite dish pole installation example.

### Antenna holder made of galvanised Ø 30 mm tube



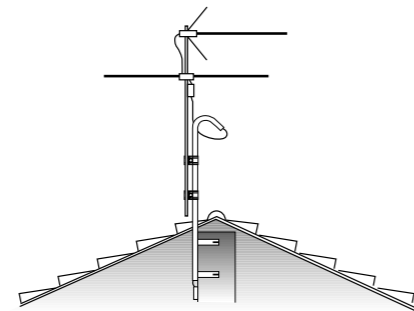
Antenna holder.  
(Codes 5703-5702)

Clip-on antenna holder.  
(Codes 5705-5706)

Code	Tube diameter mm	Length mm
5703	30	1200
5702	30	1800

Code	Tube diameter mm	Length mm
5705	30	1200
5706	30	1800

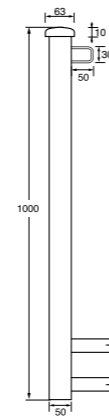


Antenna holder installation example.

## 5. Safety posts

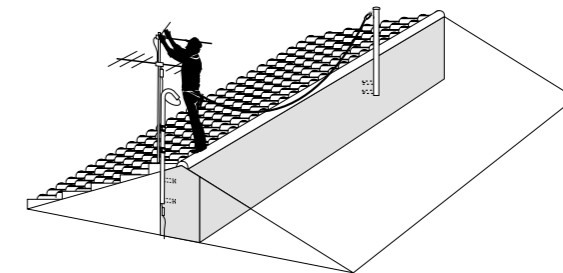


### Safety post made of galvanised Ø 50 mm tube



Safety post.

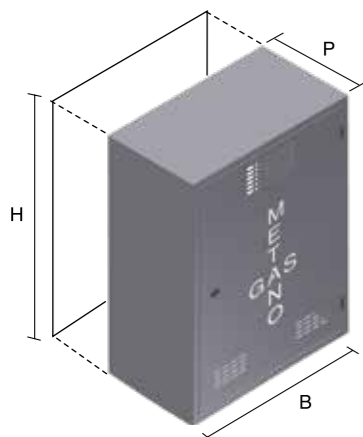
Code	Tube diameter mm	Length mm
5735	50	1000



Safety post installation examples.

## 5. Gas meter boxes

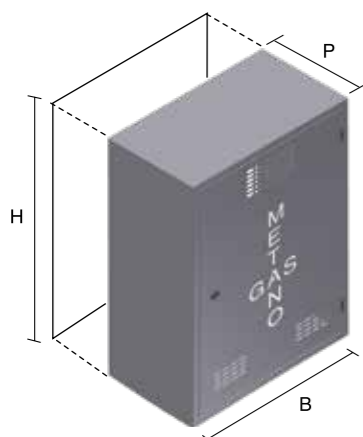
### Aluzing sheet metal gas meter box



Code	Size H×W×D mm	Back panel code
5651	500×300×250	S5651
5652	550×400×250	S5652
5655	600×500×250	S5655
5653	600×400×250	S5653
5656	600×450×250	S5656
5657	600×600×250	S5657
5658	700×400×250	S5658
5659	700×500×250	S5659
5660	800×500×250	S5660
5654*	600×800×250	S5654

Gas meter boxes and doors with special **anti-cut edges** for improved safety during opening and maintenance.

### Gas meter box made of **AISI 304 stainless steel sheet metal**

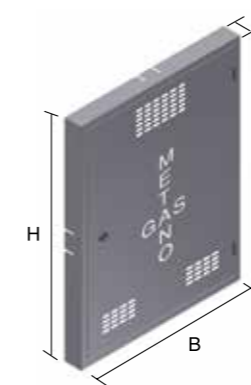


Code	Size H×W×D mm	Back panel code
5661	500×300×250	S5661
5662	550×400×250	S5662
5665	600×500×250	S5665
5663	600×400×250	S5663
5666	600×450×250	S5666
5667	600×600×250	S5667
5668	700×400×250	S5668
5669	700×500×250	S5669
5670	800×500×250	S5670

Gas meter boxes and doors with special **anti-cut edges** for improved safety during opening and maintenance.

## 5. Gas meter doors

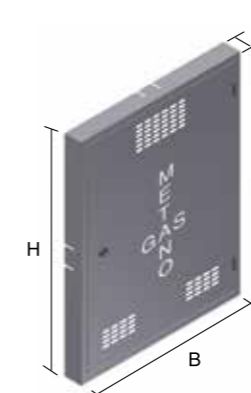
### Aluzing sheet metal gas meter doors



Code	Size H×W×D mm
5681	500×300×50
5682	550×400×50
5685	600×500×50
5686	600×450×50
5688	700×400×50
5689	700×500×50

Gas meter boxes and doors with special **anti-cut edges** for improved safety during opening and maintenance.

### Gas meter doors made of **AISI 304 stainless steel sheet metal**



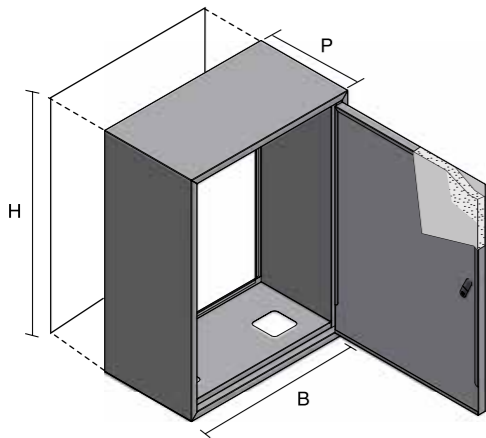
Code	Size H×W×D mm
5691	500×300×50
5692	550×400×50
5695	600×500×50
5696	600×450×50
5698	700×400×50
5699	700×500×50

Gas meter boxes and doors with special **anti-cut edges** for improved safety during opening and maintenance.

## 5. Insulated water meter boxes



### Water meter box made of Aluzing sheet metal Insulated

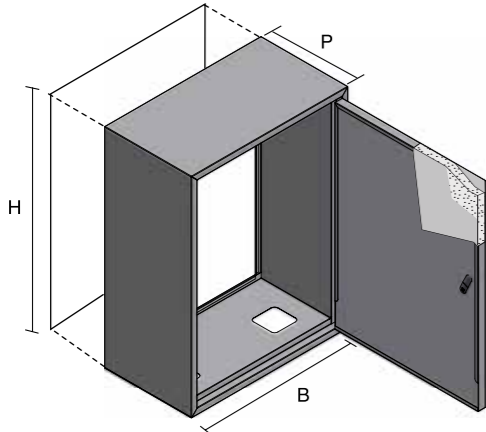


Code	Size H×W×D mm	Back panel code
5651C	500×300×250	S5651
5652C	550×400×250	S5652
5655C	600×500×250	S5655
5653C	600×400×250	S5653
5656C	600×450×250	S5656
5657C	600×600×250	S5657
5658C	700×400×250	S5658
5659C	700×500×250	S5659
5660C	800×500×250	S5660
5654C*	600×800×250	S5654

\* with 2 doors

Door insulation consisting of a lightweight composite panel with an extruded polystyrene inner core and aluminium surfaces.  
Water meter boxes and doors with special **anti-cut edges** for improved safety during opening and maintenance.

### Water meter box made of AISI 304 stainless steel sheet metal Insulated



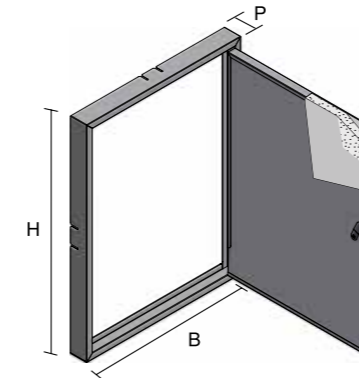
Code	Size H×W×D mm	Back panel code
5661C	500×300×250	S5661
5662C	550×400×250	S5662
5665C	600×500×250	S5665
5663C	600×400×250	S5663
5666C	600×450×250	S5666
5667C	600×600×250	S5667
5668C	700×400×250	S5668
5669C	700×500×250	S5669
5670C	800×500×250	S5670

Water meter boxes and doors with special **anti-cut edges** for improved safety during opening and maintenance.

## 5. Insulated water meter doors



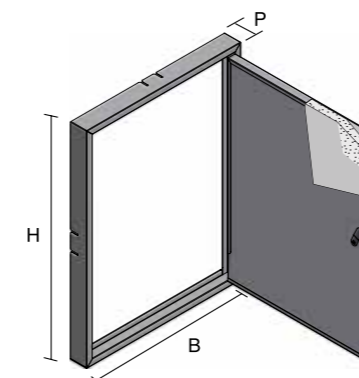
### Water meter door made of Aluzing sheet metal Insulated



Code	Size H×W×D mm
5749C	500×300×50
5748C	550×400×50
5744C	600×500×50
5745C	600×400×50
5742C	600×450×50
5750C	600×600×50

Water meter boxes and doors with special **anti-cut edges** for improved safety during opening and maintenance.

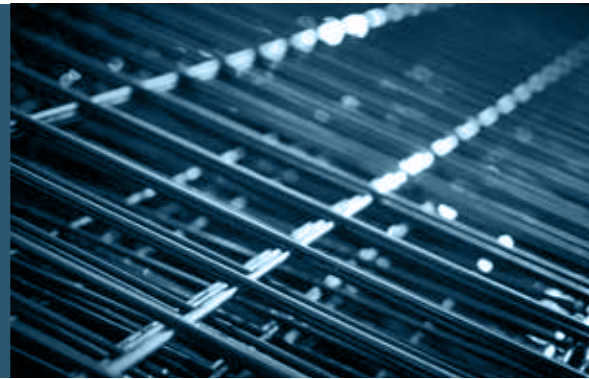
### Water meter door made of AISI 304 stainless steel sheet metal Insulated



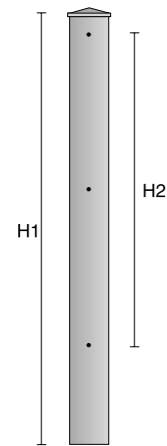
Code	Size H×W×D mm
5691C	500×300×50
5692C	550×400×50
5695C	600×500×50
5696C	600×450×50
5698C	700×400×50
5699C	700×500×50

Water meter boxes and doors with special **anti-cut edges** for improved safety during opening and maintenance.

## 5. Posts, rods and eye bolts for meshes



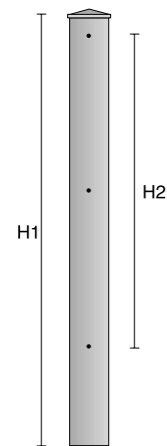
### Mesh posts made of 80×80×2 tube



Code	Size H1 – H2 mm
5751	1100 - 800
5752	1300 - 1000
5753	1550 - 1250
5754	1800 - 1500
5755	2050 - 1750
5756	2300 - 2000

With 3 holes on 3 sides for inserting eyelets.

### Mesh posts made of 100×100×2 tube



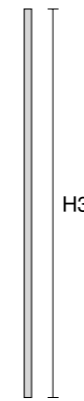
Code	Size H1 – H2 mm
5761	1100 - 800
5762	1300 - 1000
5763	1550 - 1250
5764	1800 - 1500
5765	2050 - 1750
5766	2300 - 2000

With 3 holes on 3 sides for inserting eyelets.

## 5. Posts, rods and eye bolts for meshes



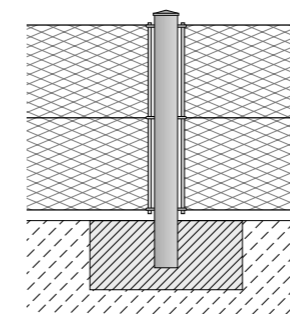
### Galvanised rods Ø 10 mm



Code	Size H3 mm
5751F	830
5752F	1030
5753F	1280
5754F	1530
5755F	1780
5756F	2030

With 3 holes on 3 sides for inserting eyelets.

### Universal eyelet



Code
5751J

Mesh post installation diagram.



## Find us

---

### **Gridiron Spa Unipersonale**

Via E. Fermi (Z.I. Ramera)  
31010 Mareno di Piave (TV)  
Italy

Tel. +39 0438.492.502

Fax +39 0438.492.545

info@gridiron.it

**Follow us on FB | IG | LinkedIn**

Discover all our products and services at  
**[www.gridiron.it](http://www.gridiron.it)**

# Gridiron Showroom

---







