

**Build your
changes.**

GRIDIRON
BUILD YOUR CHANGES



Gridiron. 40 years of Italian history

Gridiron was founded in **1979 in Italy**, in Mareno di Piave, and now operates in over **36 countries around the world**.

Still resolutely led by the **Zanette Family**, it currently runs its business from a **70,000 m²** plant in North-East Italy, with a workforce of **150 people**.

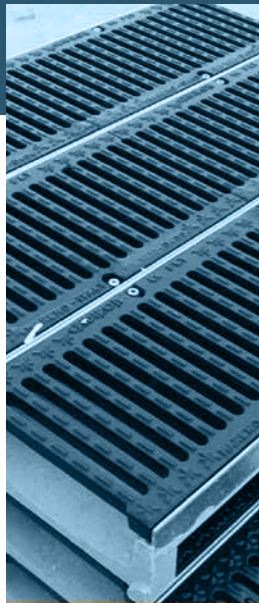
With a product range that includes **technical gratings, drainage systems, doormats and building accessories**, Gridiron's creations adorn monumental buildings in central **London**, drain water from the **Genoa St. George Bridge**, serve as components in **Atlantic Ocean** oil rigs, and combine functionality and aesthetics in upscale **public** and **private** structures.

Gridiron.

A single answer for multiple solutions

Knowing **steel** and processing it to make **technical gratings** has led us to new product categories over the years: **technical doormats**, **building accessories** and **drainage channels**.

We work with **pickled** and **galvanised strips** that are **heavier** than the market average, resulting in **better performance** for our machinery and product **finishes** that are better and significantly **longer-lasting**.



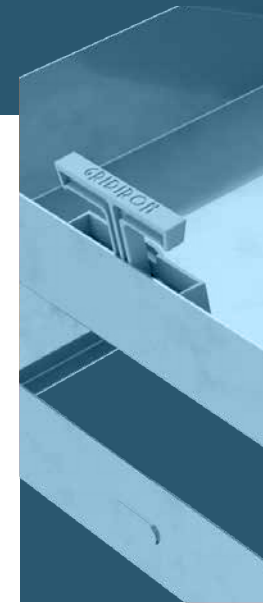
Drainage systems



Metal gratings



Stainless steel drainage systems



Building accessories



Technical doormats

Gridiron. Certificates

ISO 9001: Industrial excellence

This standard allows us to maintain and constantly improve the **quality** of our **goods** and **services** by monitoring all processes and **measuring results**, thereby ensuring a **high standard of quality** and **reliability**.

Product certifications

Our products are **CE**-marked in accordance with relevant standards:

Drainage channels: EN 1433

Gates: EN 13241

Welded steel components: EN 1090



Raw materials and technologies

Our **unique approach** derives from combining two aspects that have made **Italian manufacturing** especially renowned: **processing** of materials and **technological research** resulting in a **flexible** and **customized** approach. We always work with **first-rate suppliers**, with whom we share bonds of **trust** and **mutual esteem**. Up to this day we have kept our **production 100% in-house**.

First of all, we carry out tests with **more stringent** requirements than those prescribed by the law, and we **invest** in **new processes, software** and **machinery, reengineered** by us to ensure that Gridiron products always provide an **unmatchable quality**.

Gridiron. Services

Going from the **design** of the product, **installation** consulting and logistic support Gridiron serves as a solid **partner** for our customers, always providing a completely reliable **collaboration**.

Our main services:

Preventive analysis

Solution research

Design

Load calculations

Drafting of specifications

Installation instructions

Fast and smart logistics service





Find us

Gridiron Spa Unipersonale

Via E. Fermi (Z.I. Ramera)
31010 Mareno di Piave (TV)
Italy

Tel. +39 0438.492.502

Fax +39 0438.492.545

info@gridiron.it

Follow us on FB | IG | LinkedIn

Discover all our products and services at

www.gridiron.it

Products

Drainage systems

We are **the only manufacturer** in **Europe** that is able to provide all necessary parts for **the entire drainage system**: channels, sump units, accessories, edges rails and gratings in galvanised or stainless steel. We also offer products in **three** different materials: **concrete (both vibro-compressed and reinforced)**, **polymer** and **ABS**.

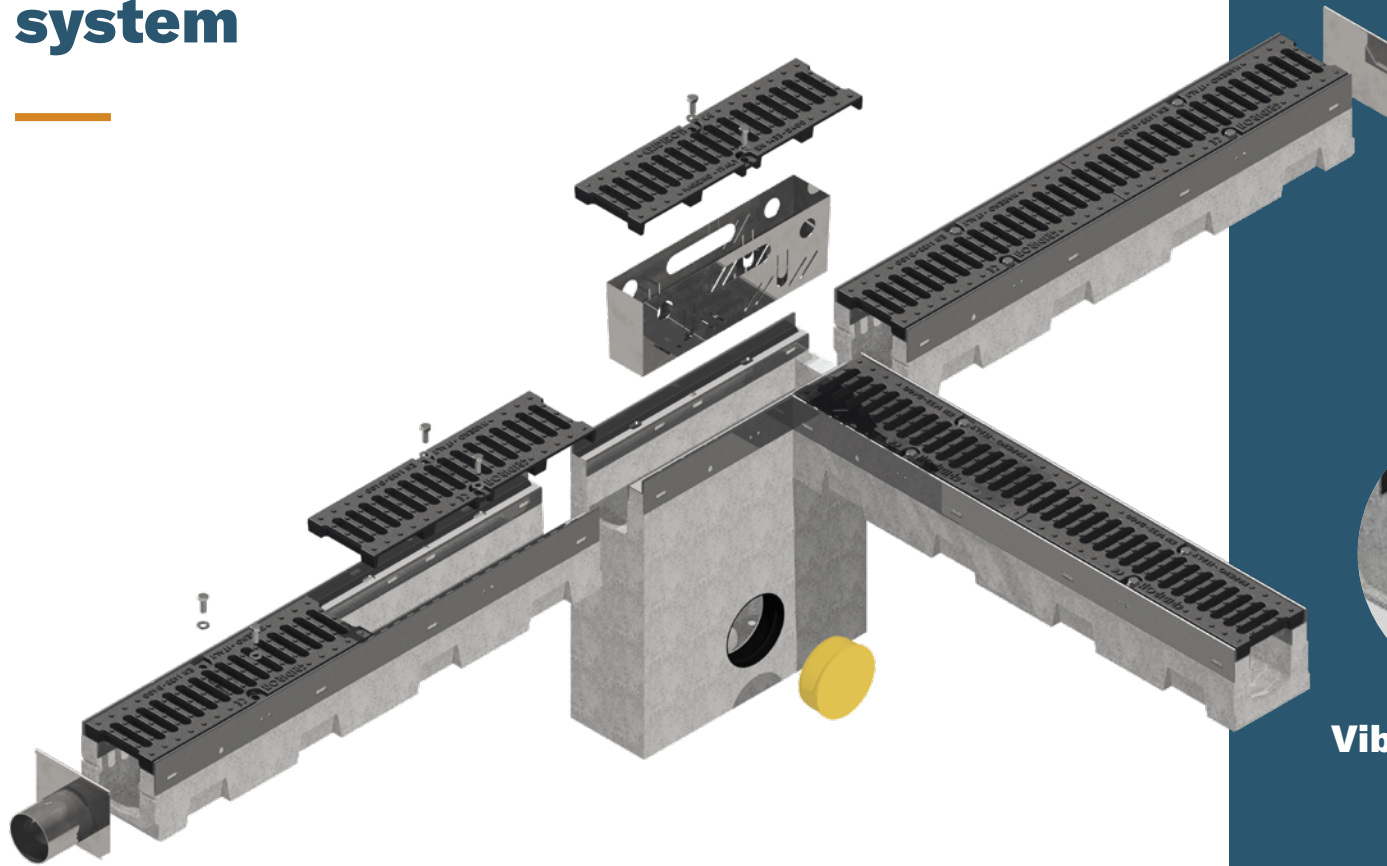
Our **standard products** provide endless customisation options, offering the ideal solution for every application from **major works** to **exclusive projects**.



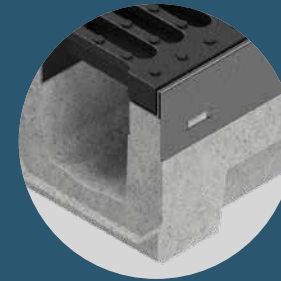
For every need and type of installation



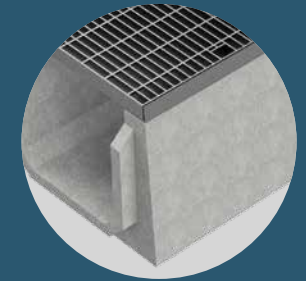
The Gridiron system



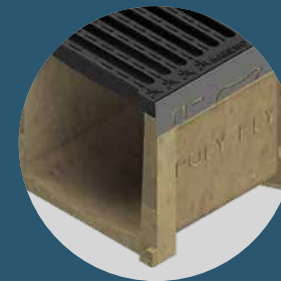
Different materials, same excellent quality.



Vibro-compressed concrete



Reinforced concrete



Polymer concrete



ABS

Some technical information on our **standard** channels:

- Height: from 60 mm to 1280 mm
- Width: from 100 mm to 800 mm
- Length: 500 mm to 5000 mm
- Load-bearing capacity: A15 to F900

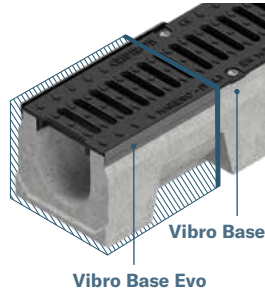
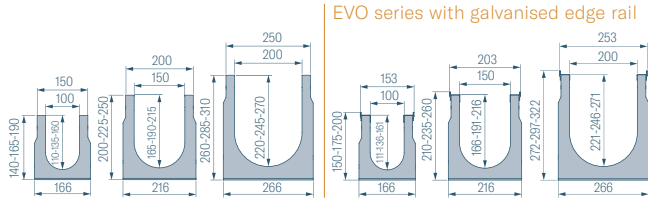
Vibro-compressed concrete channels

Vibro Base Series (100 - 150 - 200)

Vibro Base Evo Series (100 - 150 - 200)

18 sections

for 3 nominal internal widths (100, 150, 200)



8 grating types: ductile iron, galvanised and stainless steel press-formed metal sheet, and pressure-locked grating (also available with a heelguard mesh).

Available accessories: sump unit, end cap and end cap with outlet.

3 load classes:



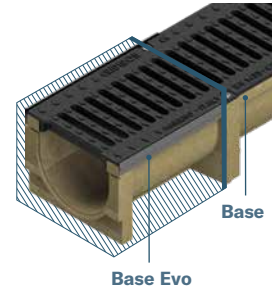
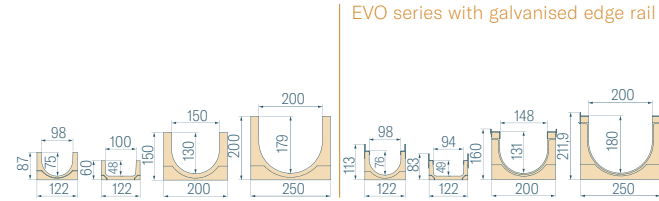
Polymer concrete channels

Base Series (100 - 150 - 200)

Base Evo Series (100 - 150 - 200)

8 sections

for 3 nominal internal widths (100, 150, 200)



7 grating types: galvanised and stainless steel press-formed metal sheet, pressure-locked grating (also available with a heelguard mesh), ductile iron.

Available accessories: sump unit, end cap and end cap with outlet.

3 load classes:

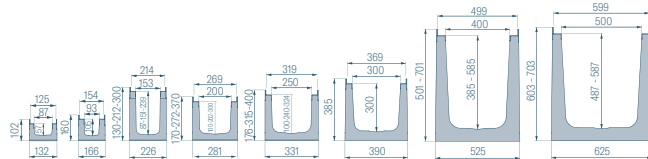


Vibro-compressed concrete channels

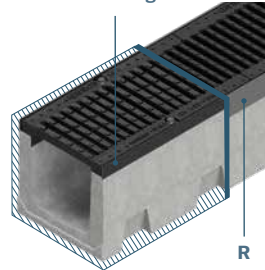
R Series (122 - 150 - 210 - 265 - 315 - 365 - 495 - 595)

16 sections with galvanised steel edge rail and 11 sections with ductile iron edge rail

for 8 nominal internal widths (90, 100, 150, 200, 250, 300, 400, 500)



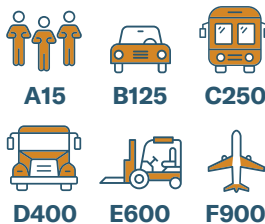
Also available with ductile iron edge rails



7 grating types: D400, E600 and F900 ductile iron, pressure-locked grating (also available with a heelguard mesh), embossed and press-formed full metal sheet.

Available accessories: sump unit, end cap and end cap with outlet.

6 load classes:

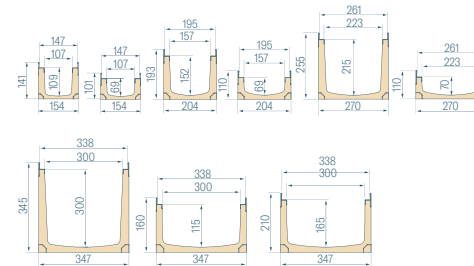


Polymer concrete channels

Poly Fly Series (100 - 150 - 200 - 300)

9 sections

for 4 nominal internal widths (100, 150, 200, 300) - 2 protective edge rails available for each section: galvanised and AISI 304 stainless steel

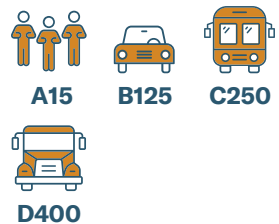


7 grating types for the galvanised edge rail: ductile iron, pressure-locked grating (also available with a heelguard mesh), embossed full metal sheet, press-formed metal sheet.

6 grating types for the stainless steel edge rail: pressure-locked grating (also available with a heelguard mesh), embossed full metal sheet, press-formed metal sheet.

Available accessories: sump unit, end cap and end cap with outlet.

4 load classes:

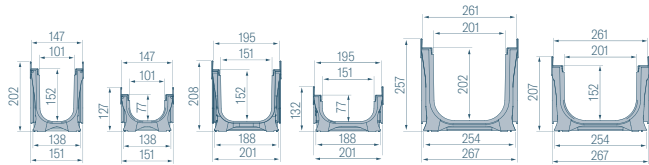


ABS channels Plastic Fly (100 - 150 - 200)

6 sections

for 3 nominal internal widths (100, 150, 200)

3 protective edge rails available: ABS, galvanised and AISI 304 stainless steel



9 grating types to match the different channel edge rails: galvanised and stainless steel press-formed metal sheet, galvanised and stainless steel pressure-locked grating (also available with a heelguard mesh), galvanised and stainless steel embossed full metal sheet, and ductile iron.

Available accessories: end cap and end cap with outlet.

3 load classes:



Channels with Thin covers

- Ideal for the renovation of town squares and old town centres
- Available in different sizes and heights
- Also available in AISI 304 stainless steel and AISI 316 stainless steel upon request
- The product can be combined with Gridiron's wide range of channels
- Available for use in applications with D400 load classes



Channels with Special covers

- Fine design and aesthetically distinctive gratings
- A touch of elegance for paving
- Available in AISI 304 stainless steel and AISI 316 stainless steel upon request
- The product can be combined with Poly Fly 100 channels with a stainless steel edge rail



Horizon



Moon



Metrol



Dolomites

Manhole covers

We ensure a **thicker galvanisation** (Z200) than the market average, for a **longer** life and a better **finish**.

A **well-stocked warehouse** and our **production flexibility** ensure **fast** and **timely delivery** to our customers.

Endless customisation options can be applied to **materials, dimensions** and **finishes**.



Traditional lifting



Lifting with a pull-out handle



Power-assisted lifting



"L" and "T" frame

Combined with different sizes and lifting modes.

Height 30 mm - 150 mm

Available in endless combinations in terms of size, clear opening and thickness, the range of standard sizes will meet all requirements.



Special and customised manhole covers



Quick and efficient collaboration between sales, technical and productive departments allow us to **design** and **produce** manhole covers of any **size** and **load class**. The result is a product that not only meets the customer's requirements, but is also meticulously **tested** and certified in accordance with industry standards.

Some of our special manhole covers:

- **Green** (drainage and filling, for green areas)
- **Key** (watertight)
- **Funnel** (with draining slot edge rail and internal funnel-shaped structure)
- **Storm** (with gully grating, assisted by strategic slots)
- **Valet** (with power-assisted lifting)
- **Powerful** (high load-bearing performance)

